



annual report **2010**

Service • Education • Advocacy

 **Planned Parenthood**[®]
of the Pacific Southwest

WE'RE HERE.SM

The Mission Statement

The mission of Planned Parenthood of the Pacific Southwest is to ensure broad public access to reproductive health care through direct service, education, and advocacy.



2010

Board of Directors and Executive Team

Board of Directors

Board Chair

Tracy Loughridge

Vice Chair

Sid Voorakkara

Liaison to Pro Salud

Norma Ojeda

Secretary

Elizabeth Studebaker

Treasurer

Veronica Dela Rosa

Board Members

Susan Atkins

Toni Atkins

Rita Atkinson

Estela Blanco

LaVerne Brown

Barbara Bry

Anita Busquets

Jennifer Dreyer

Claudia Galvez

R. Elaine Hanson, M.D.

Rudolph Johnson

Jennifer Kish

Leanne Hull MacDougall

Deborah Pate

Humberto Peraza

Kathleen Strauss, Ph.D.

Lisa Walters

Linda Wasserman, M.D., Ph.D.

Ex-Officio Members

Harry Carter

PPFA National Board Member

David Preskill, M.D.

Past Board Chair

Jessica Kingston, M.D.

*Medical Advisory Committee
Chair*

Fran Rodenberg

*Friends of Planned Parenthood
President*

Samuel Ward

Action Fund Board Chair

Executive Team

President & CEO

Darrah DiGiorgio Johnson

Executive Vice President

Nancy Sasaki

Medical Director

Katharine Sheehan, M.D.

Vice President/ Chief Financial Officer

Len Dodson

Senior Vice President/ Patient Services

Angela Reed

Vice President/ Development

Keith Limberg

Vice President/ Strategy Management

Rebecca Karpinski

Vice President/ Information Technology/ CIO

Valarie Williams

Vice President/Public Affairs & Communications

Vince Hall

Vice President/ Community Engagement

Nora Vargas

Credits

Editor/Director of Communications & Marketing

Jennifer Coburn

Copywriters

Mary Veta

Kersten Wehde

Graphic Design

Suzette Durazo



Darrah DiGiorgio Johnson, President & CEO

Dear Friends,

This was a year of great change and opportunity for Planned Parenthood – and for our nation as a whole. Congress passed historic health care reform legislation that will create greater access to health care than we have ever had in this country. At Planned Parenthood, we have always provided reproductive and sexual health care services regardless of a person's insurance status or ability to pay. In fact, in 2010 we provided life-saving cervical, breast and testicular cancer screenings, testing and treatment for sexually transmitted infections, contraception and more through nearly 300,000 patient visits. More than ever, women and men in our region count on Planned Parenthood.

As we continue to expand our services in the region, we are also preparing for the shift in health care delivery once health care reform is fully implemented. Many of our patients currently have private health insurance yet choose to come to Planned Parenthood because of the warm, caring, non judgmental way they are treated. We will build on the trust we have earned in the community and continue to thrive under health care reform.

During the discussion around health care reform, Planned Parenthood successfully lobbied our federal legislators to ensure that reproductive and sexual health care is covered in the health care reform package. Planned Parenthood was also instrumental in helping to defeat the Stupak Amendment, which would have banned coverage for most abortions from public and private health plans in the health care exchanges.

You may have also noticed that our name changed. To better reflect our commitment to the San Diego, Riverside and Imperial Counties, our Board voted to become *Planned Parenthood of the Pacific Southwest*. We have already expanded several educational and community engagement programs to reach underserved residents of Imperial County, and we look forward to deepening our partnerships in the region. Planned Parenthood has been heartened by the warm welcome from Imperial County schools, elected officials and community leaders.

Like every not-for-profit organization, Planned Parenthood of the Pacific Southwest has had to take a hard look at our expenses and tighten our belts. Without sacrificing quality of care, we have made financially prudent adjustments that will help us increase efficiency and continue to provide life-saving treatment and programs to the community.

Thank you for all you do to support reproductive and sexual health. We know that we would not be able to make such a significant impact in the community without your steadfast commitment to Planned Parenthood of the Pacific Southwest.

Darrah DiGiorgio Johnson, President & CEO | Tracy Loughridge, Board Chair



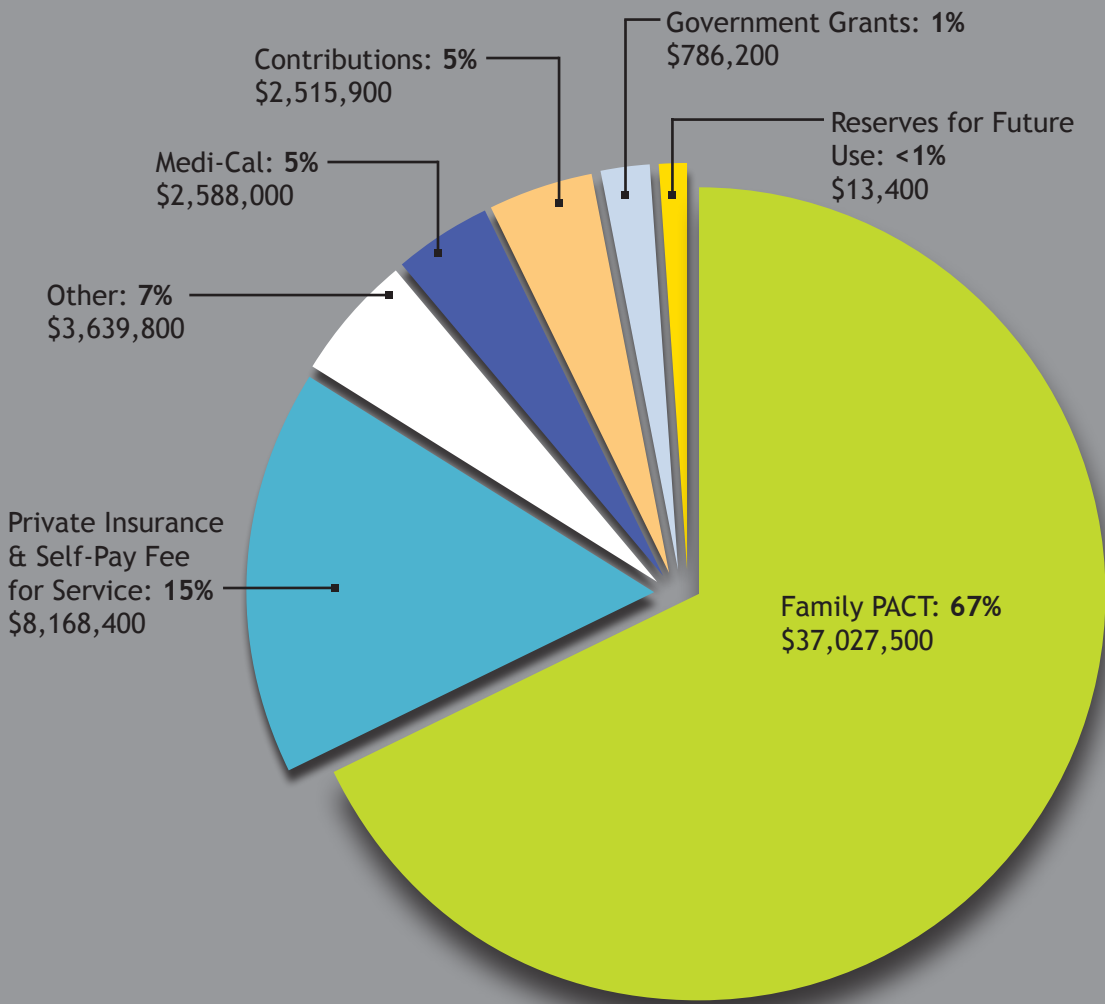
Tracy Loughridge, Board Chair



“Planned Parenthood is very helpful with any questions you may have and they’re all so nice. They give you birth control and STI testing if you can’t afford it.”

Chelsea & Loren

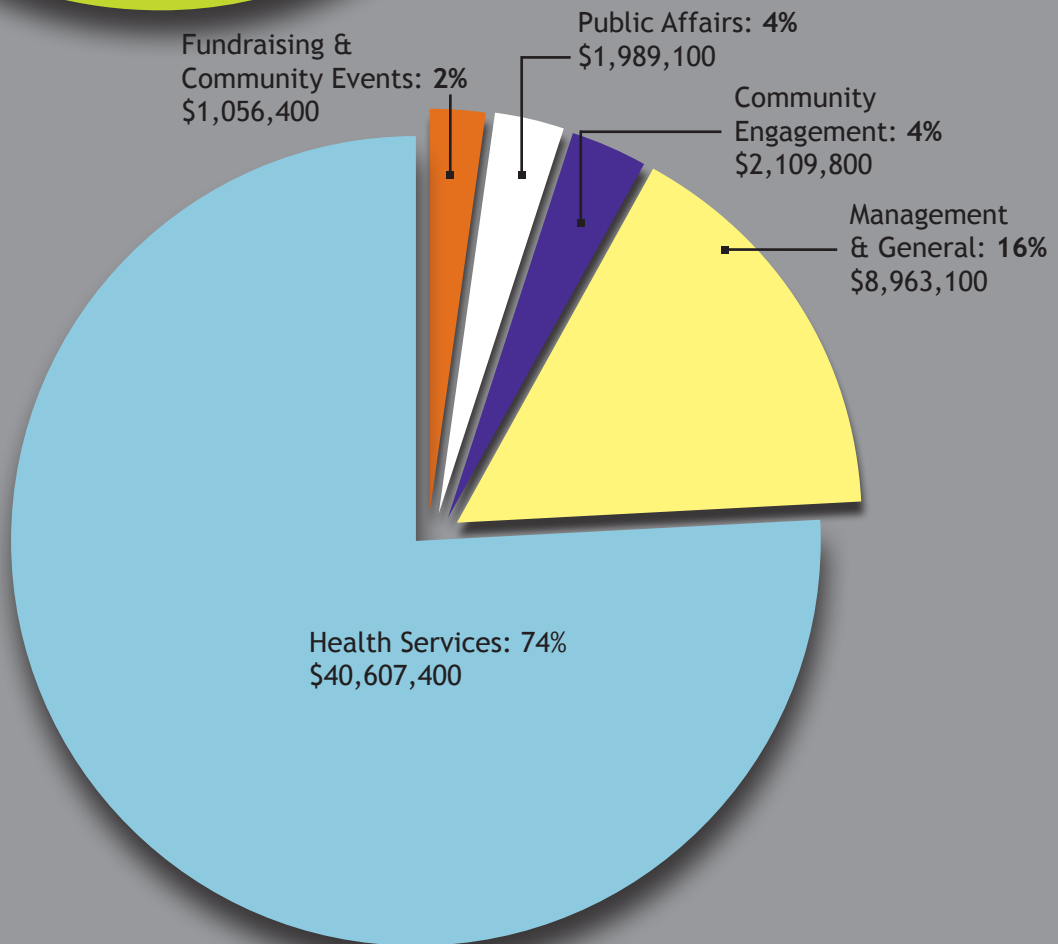
Financial Overview



Revenue:
Total Funds = \$54,739,200

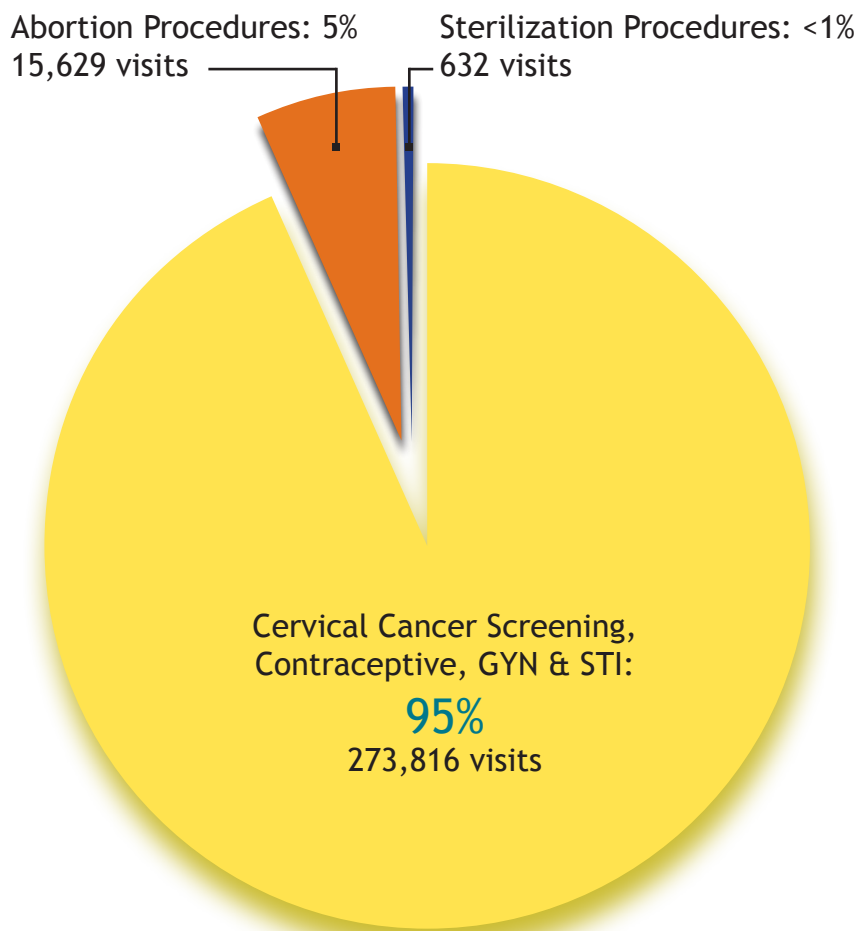
Expenses

Total Expenses = \$54,725,800





Patient Services



2010 Medical Visits

Total Patient Visits: **290,077**

*You trust Planned Parenthood...
Planned Parenthood trusts you.*

WE'RE HERE.SM

Patient Services

This was another year of growth and expansion designed to meet the needs of the communities we serve.

We served **151,593** patients through 290,077 health center visits. Additionally, we performed 242,998 lab tests for Chlamydia and Gonorrhea and 71,348 HIV tests. We also saw the completion of many key projects and quality improvements.

We completed the implementation of electronic medical records at all 19 health centers. This quality enhancement initiative involved training 400+ staff, including physicians, mid-level clinicians, RNs, center leaders, front line staff and contact center staff. We also rolled out an electronic lab results system for our patients to easily access their lab results through the Internet or telephone.

- We expanded our health center hours to better serve our patients' busy lifestyles. Many of our health centers are now open nearly 12 hours a day and on Sundays.
- We completed the expansion and remodels of our Moreno Valley, Coachella and Rancho Mirage health centers which increased our ability to serve patients in Riverside County. We also expanded our colposcopy and LEEP services throughout the region to better prevent and detect cervical abnormalities.
- We expanded preventive services at our health centers. We now provide Gardasil, the HPV vaccine, for men to help prevent genital warts and the transmission of the viruses that cause cervical cancer.
- We conducted a survey of more than 10,000 patients about the care they receive at Planned Parenthood. An overwhelming 98% of our patients stated that our clinicians are friendly, courteous, thorough, caring and respectful.
- We continued our outreach efforts to serve those who cannot easily access our health centers. We partnered with other community service agencies to provide H1N1 vaccines in the Coachella Valley. We also participated in several community health fairs where we provided rapid HIV testing, breast exams, Gardasil vaccines and education services.
- In April, we participated in GYTNOW - "Get Yourself Talking and Tested." This partnership with MTV, Kaiser Family Foundation and the Centers for Disease Control raised community awareness about testing for Chlamydia, Gonorrhea and HIV, as well as the importance of normalizing conversations about sexually transmitted infections. We provided 29,051 Chlamydia, Gonorrhea and HIV tests in April, up a whopping 41% from GYT month in April 2009.
- We hosted a delegation of Public Health Officials from Mexico City for a three-day visit to observe abortion care at our health centers. The Federal District of Mexico is the only State where abortion is legal in Mexico. We were honored to be selected as a best practice model for abortion services.

"Every woman/man should have the option to be safe and healthy regardless of ethnicity or income. Everyone should have options to make decisions about their own life."

-Irma

"Most people I know don't have health insurance these days, therefore it is imperative to provide low cost reproductive health care services for men and women."

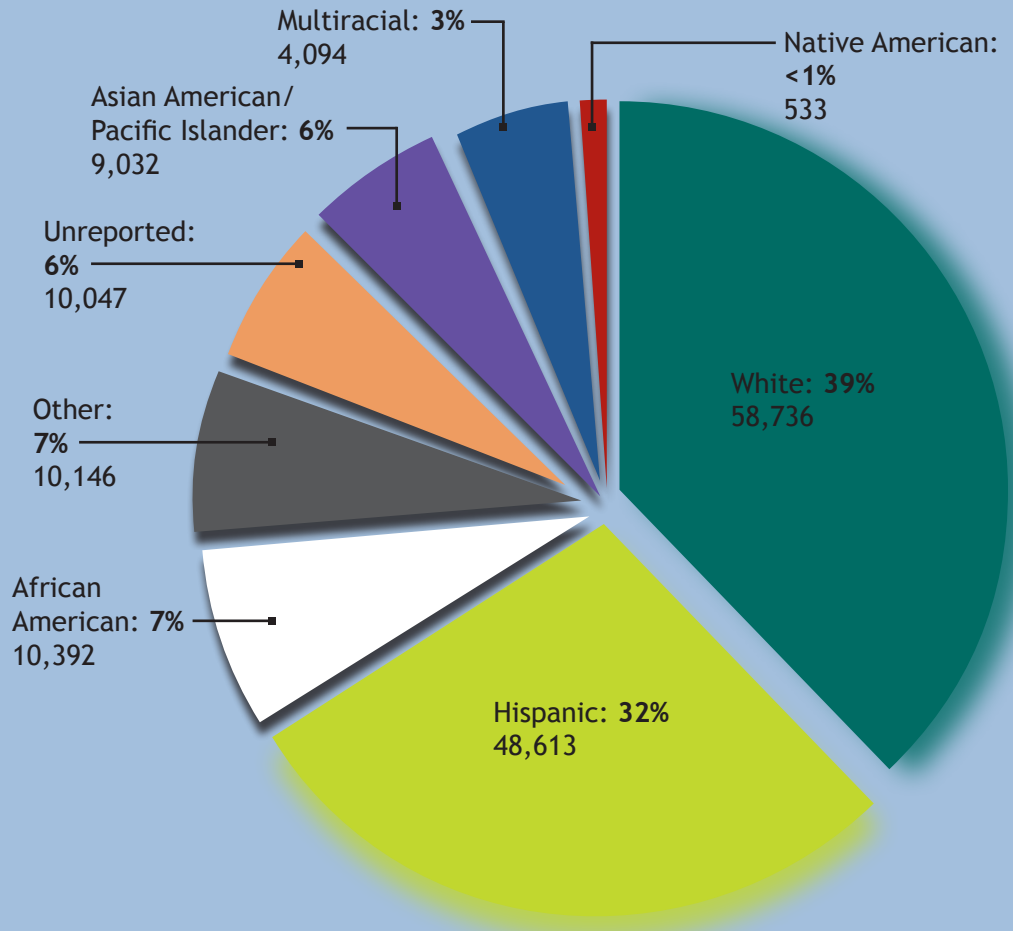
-Paul

"I love Planned Parenthood because they do NOT treat me like a number."

-Elizabeth

Patients by Race/Ethnicity

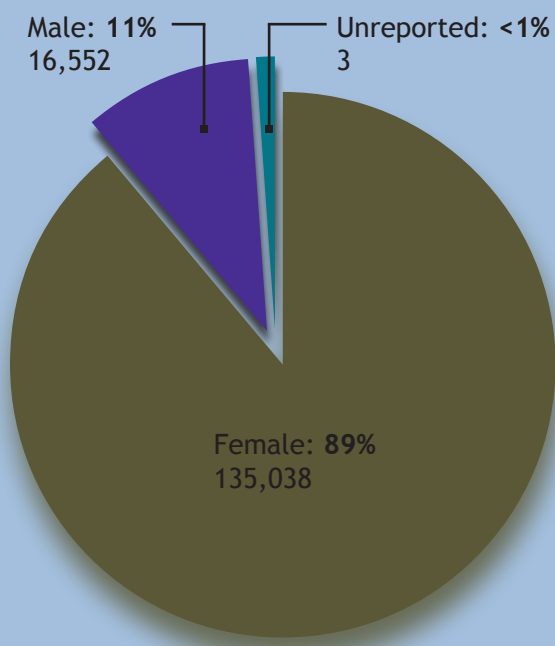
Total: 151,593



Patient Demographics

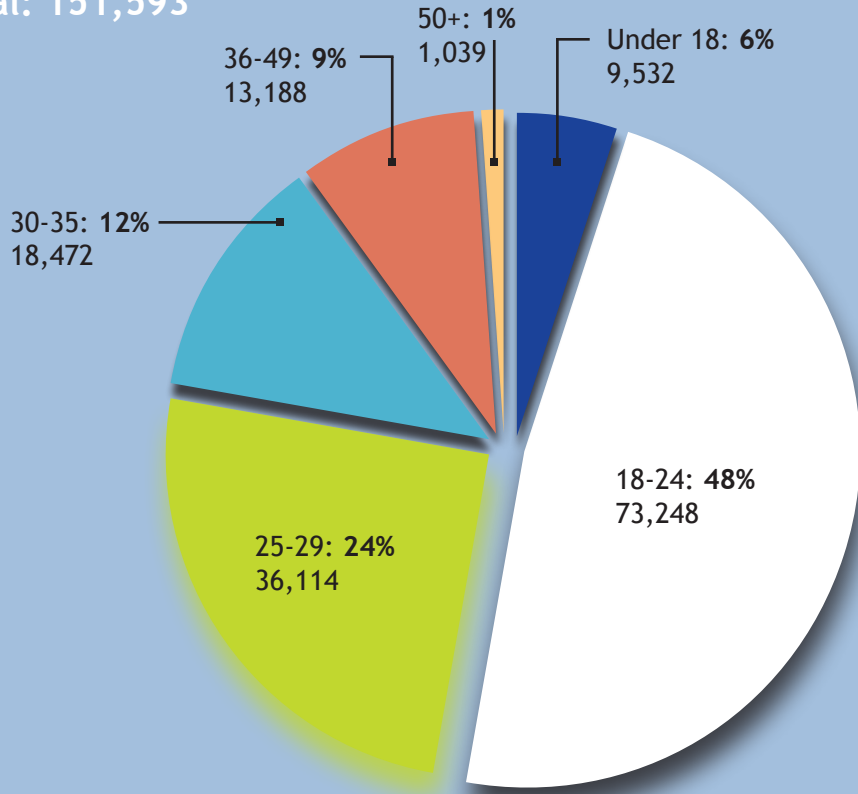
Patients by Gender

Total: 151,593



Patients by Age

Total: 151,593



You count on us

You can count on Planned Parenthood to be there for every person, every family, every community.



“Planned Parenthood is here
for every family.”

Jon & Shawn

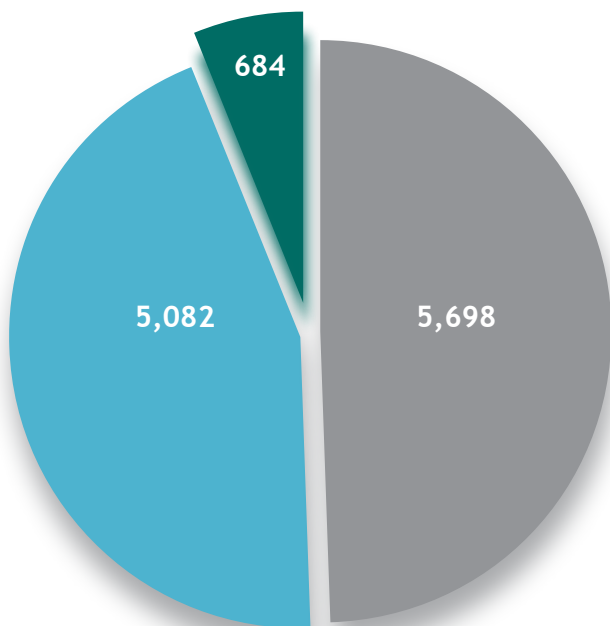
 Planned Parenthood® | WE'RE HERE.™

Community Engagement

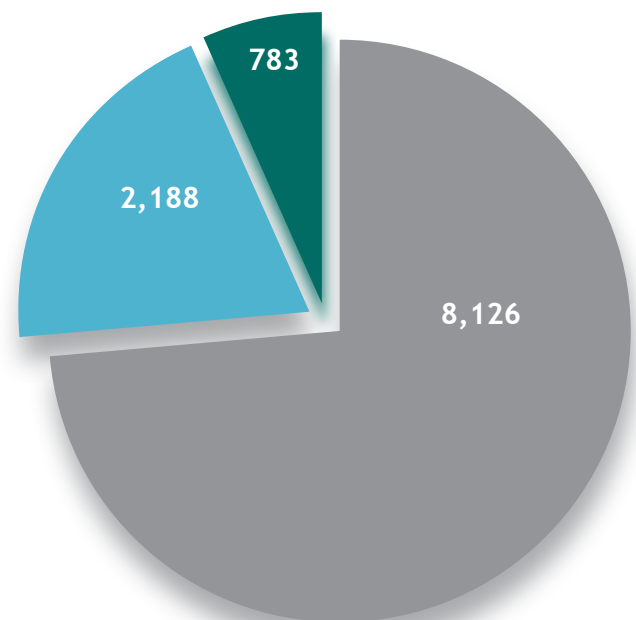
The Community Engagement Department represents and advances the mission of PPSW by contributing to and strengthening partnerships through community collaboration, outreach and education.

Four programs engage the community with bold, innovative educational outreach strategies aimed at increasing access to health care. Our Binational Affairs, Latino Engagement Initiative, Community Engagement, and Community-Based Health Initiatives (CBHI) programs enjoyed tremendous success in 2010. In our three-county region, we positively impacted the lives of 37,970 people; 22,561 through educational presentations, and 15,409 through outreach efforts.

Adolescents - Educational



Adults - Educational



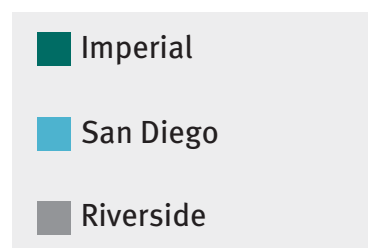
Since 1963, PPSW has been providing quality education programs to the community. Through the generosity of supporters like Carolyn and DeWitt Shuck and others, we continue to provide comprehensive, age-appropriate sexuality education that empowers people to make healthy choices.

In 2010, the programs of the Community Engagement Department presented to 11,464 youth including:

- 43 parenting teens in the Teen Success program
- 211 students in the Youth Development Program
- 2,414 through the work of our CBHI Promotor@s

We also reached 11,097 adults including:

- 572 participants of our Parent-Child Communication program
- 1,136 Professional Trainings
- 7,151 by CBHI Promotor@s



Binational Affairs and Latino Engagement Programs

“Many teenagers and low income families should feel encouraged to use this service because it is inexpensive to use.”

—Bianca

“It helps me make better choices in life. It is a safe place I can come to for questions regarding sexual health and be able to get the help I need.”

—Justin

“Women and men should not have to go to extremes to receive care. Every person has the right to be healthy and make their own choices and therefore every person has the right to seek care.”

—Tiara



Binational Affairs identifies key reproductive health issues and initiatives impacting the border region and the binational community.

It strives to strengthen relationships, collaboration and partnerships with our neighbors to the south. The department works closely with the Latino Engagement Initiative, which focuses its efforts on identifying, collaborating and working with the Latino community in the region.

- We had the privilege of hosting INPPARES, the International Planned Parenthood Federation affiliate from Peru. During our three-day cultural exchange, PPSW provided information on our Teen-Parent Communication programs and learned about the best practices from the INPPARES education and advocacy programs.
- As proud members of the Binational Health Week Coalition, we participated in numerous events that provided Latino families with critical information about sexual and reproductive health.
- We hosted the Second Annual Binational Dialogue on the Status of Reproductive Rights in Mexico and the United States, a discussion among legislators, advocates and community leaders about reproductive health issues affecting both sides of the international border. This dynamic forum also provided a wealth of information about issues impacting the Latino communities in the U.S.
- We co-chaired the Binational HIV/STI Committee and hosted the Tenth Annual Binational HIV/AIDS Conference in Tijuana, working toward strengthening cross-border collaboration.
- Our partnership with Fronteras Unidas Pro-Salud (FUPS) continues to thrive as the organization opened a new community clinic in Altiplano, one of the most densely populated and impoverished areas in Tijuana. FUPS also inaugurated its first mobile clinic, which offers services to communities in Baja California that have limited access to transportation.



Education

Community Engagement provides education in the classroom and to community partners, and builds effective relationships with community leaders, stakeholders and organizations that work collaboratively to improve reproductive health in the region.

Through strategic partnerships, we develop a deeper understanding of community systems and needs, introducing proactive educational and health care solutions.

- We hosted our first Neighborhood Health Fair at the PPPSW Riverside Family Planning center. This free community event included testing for sexually transmitted infections, pregnancy testing, emergency contraception and appointment scheduling. In addition to offering medical services and education, we invited other Riverside community groups that provided health screenings and financial counseling.
- We administered Gardasil, the HPV vaccine, during community health events like National HIV Testing Day, and National Black HIV/AIDS Awareness Day.
- Our partnership with the United African-American Ministerial Action Council (UAAMAC) grew stronger as we provided education and medical services at the organization's community events.
- PPPSW formed a new partnership with the Moreno Valley Unified School District in Riverside County, which includes working with school nurses, delivering comprehensive sexuality education, and fostering healthy family communication. This community is particularly important as it was identified as a "hot spot" for teen pregnancy and sexually transmitted infections.
- We continued to assist San Diego Unified School District in training teachers on the district's sex education curriculum.
- We collaborated with our Chula Vista Health Center to provide education outreach and breast cancer screenings to the South Bay community.
- As active members of the Mid-City Community Action Network's Teen Sexual Health Momentum Team, PPPSW staff collaborated with other leading service providers to host CORE, a large-scale event to promote healthy relationships and attitudes among youth. The event featured innovative workshops and cultural activities, including graffiti art, yoga, collage and film.
- We maintained productive collaborative relationships with organizations like the Black Infant Health Program, Project New Village, Neighborhood House Association, and Somali Youth United.
- Our Teen Success program continues to provide guidance and encouragement to teen moms while helping them develop the skills they need to set goals and make positive life choices.

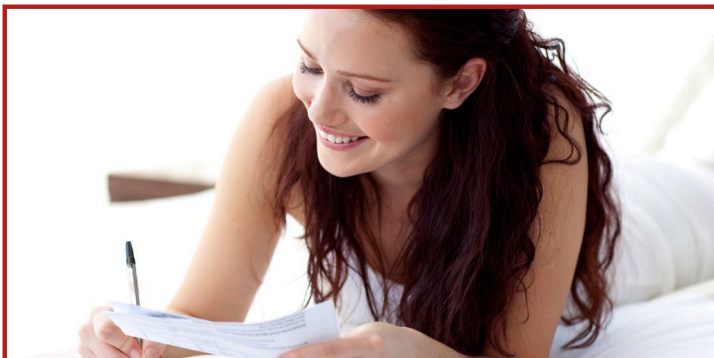
WE'RE HERE.SM

Community-Based Health Initiatives



Community-Based Health Initiatives actively promotes healthy behaviors and choices by recruiting and training health workers and Promotor@s who provide access to services and education to their peers.

- Inspired by the work of PPPSW peer educators, California State Assemblyman Victor Manuel Perez created “Promotor@s Month,” honoring the hard work and positive impact of the women and men who promote health in their communities. With Clínicas de Salud del Pueblo, Perez recognized Promotor@s at Fiesta Campesina, the first recognition event for Promotor@s in Imperial County.
- PPPSW and the Center for Employment Training collaborated for the fifth year to sponsor a Posada holiday celebration. This event was well attended by community members who enjoyed music, raffles, prizes, piñatas and various festive activities. Aside from providing information and condoms, PPPSW partnered with other community leaders to offer underserved children toys donated by Toys for Tots.
- We had the opportunity to work with Project Concern International, creatively engaging our patients by providing hundreds of swine flu (H1N1) vaccines to residents of Coachella Valley.
- Through a grant from the Anderson Children’s Foundation, we partnered with the Coachella Valley Youth Soccer Association to provide educational presentations to more than 200 youths and parents.
- We continued our membership with the San Diego Refugee Forum and actively participated in the Forum Health Task Force.
- PPPSW supporter Jan Tuttleman sponsored Sylvia Barron, Senior Director of Community Based Health Initiatives, on an educational mission to the Andean Mountain communities in Peru. Sylvia provided information on basic anatomy, physiology, birth control methods, gender perspective, healthy relationships, sexual orientation, and Promotor@s program.



“Her clarity and complete command of the subject material made this a very special occasion for everyone.”

Dear Planned Parenthood,

Thank you for sending Sylvia Barron to provide an enlightening education program for us.

All the materials that Sylvia presented to the children were excellent and age-appropriate. The children especially appreciated the materials on familial violence and what seemed to be especially important for the students was her presentation on how to find solutions for all the different problems they face in their lives.

Sylvia showed great ability to teach what may be to others sensitive subject matters. Her ability to talk calmly and explain things clearly, in an understandable manner, kept the students, practitioners, teachers and attending adults fully focused on every word she had to say.

Sylvia has to be one of the very best teachers that anyone has experienced in the Andes. Her clarity and complete command of the subject material made this a very special occasion for everyone.

On behalf of the Willka T'ika's Children's Fund and Young Woman's Academy, we would like to thank Planned Parenthood for its part in enabling Sylvia to travel with all her materials to the Sacred Valley in the Andes, Peru.

Sincerely,

Carol Cumes

Willka T'ika Holistic Retreat





“Without these services, I would be unable to afford health care. Reproductivity, preventing unwanted pregnancy and protection against STIs is important!”

Kath

WE'RE HERE.SM

Public Affairs

The Public Affairs Department was instrumental once again in protecting Family PACT, the state family planning program, from proposed cuts in the State budget.

Family PACT provides life-saving cervical cancer screenings, testing and treatment for sexually transmitted infections, and contraception and other preventive care to 1.65 million clients statewide.

- Through a combination of Capitol meetings, district meetings, postcard campaigns, phone call campaigns and email blasts, we successfully carried our message to legislators and preserved funding for family planning.
- We participated in the largest Planned Parenthood Capitol Day in California, bringing 118 supporters (including 75 teens) from our region to join more than 1,000 other California Planned Parenthood supporters to lobby elected officials in Sacramento. With more than 30 schools represented from our region, our Teen Capitol Day program doubled in size from last year.
- Healthy Neighborhoods Outreach, a public awareness and patient recruitment program launched by Public Affairs, reached 5,500 households in City Heights, Southeast San Diego and Escondido, educating residents about Planned Parenthood services and locations in their neighborhoods.
- We lobbied our federal legislators to protect reproductive health care in the health care reform debate, and argued that essential community providers like Planned Parenthood should be included in health plan networks so patients can access care from trusted providers. PPSW was also instrumental in helping to defeat the Stupak Amendment, which would have banned coverage for most abortions from all public and private health plans in the proposed health care insurance exchanges.
- PPSW was a major contributor to the campaign to defeat Alaska's Parental Notification Initiative. As Alaska fought a parental notification initiative, we loaned our Campaign Manager, Rhiannon Good, to our sister affiliate Planned Parenthood of the Great Northwest to serve as their Statewide Campaign Manager.





“Planned Parenthood gives everyone easy access to help ourselves with the choices we make every day.”

Rick

Thank You

2010 Donors

Thank you to the following donors who made gifts in 2010 to generously support the mission of PPPSW and enable us to continue our vital work in our three-county region.

Every attempt has been made to ensure accuracy in the donors list. However, in compiling such a list, omissions and misspellings sometimes occur. Please advise us of any errors by calling the Development Department at 619-881-4604, or emailing hwatchler@planned.org.

Visionary Leaders Circle (\$10,000 +)

K. Andrew Achterkirchen
Roberta Allen
American Express
Irene W. and Guy L. Anderson
Children's Foundation
Drs. Richard and Rita Atkinson
Blue Shield of California Foundation
Deborah G. Carstens
Guy C. Clum
Dr. Clifford and Carolyn Colwell
Community Clinics Initiative
Cecilia H. Dunne
Elisabeth (Jinx) Ecke
Herb and Paula Engel
Susanna and Michael Flaster
The Karney Flaster Family
Foundation
Foster Family Fund
Enid and Martin Gleich
Beverly Grant
R. Elaine Hanson, M.D. and
Bruce A. Robbins, M.D.
George Hecht
Dr. Jerry Heller and Patty Heller
Theodora Ives
Nora Taylor Jaffe
Legler Benbough Foundation
Jenny and Wes Mudge
John G. Pitcairn
Planned Parenthood Federation
of America
Planned Parenthood Mar Monte
Price Family Charitable Fund

Mrs. Elizabeth Wall Ralston
Marisa and Bill Rastetter
Riverside Community Health
Foundation
Strauss Family Foundation
Brian Strauss
Diana Strauss Casey
Kathleen L. Strauss, Ph.D.
Paul and Anita Strauss
Randy Strauss
United Way of San Diego County
Molli and Arthur Wagner, Ph.D.
Katherine D. White
Sheryl and Harvey White
The Sheryl and Harvey White
Foundation

Patron Circle (\$5,000-\$9,999)

Susan and Crystal Atkins-Weathers
Joan Bernstein
Betty Beyster
Beyster Family Foundation
Catherine and Philip Blair
LaVerne and Harold Brown
Barbara Bry and Neil Senturia
Valerie and Harry Cooper
Amy Corton and Carl Eibl
Marion Dixon
Jackie and Stan Drosch
Dr. Charles C. and Sue K. Edwards
Pauline Foster
Drs. Edward and Joy Frieman
Bobbie and Jon Gilbert

Deborah and Donald Halliday
Mrs. Peggy E. Hill
Rosanne and Joel Holliday
Drs. Stacy and Paul Jacobs
Linda and Mel Katz
Dori and Charles Kaufman
Sharon and Joel Labovitz
Local Independent Charities
Tracy Loughridge
Jane and Jeffrey Marks
Dr. Maggie and Mr. Paul Meyer
John Moores, Sr.
Ellen and Coleman Mosley
Sara Moser
Drs. David and Catalina Preskill
Maurice Rapkin
Ms. Julie Ruedi and
Robert Engler, M.D.
V. DeWitt Shuck

Benefactor Circle (\$2,500-\$4,999)

Betty Amber
Rhonda Amber
Robert and Yuko Burkett
California Bank & Trust
Theresa and Ted Clowes
Council of Community Clinics
Daniel and Nancy Donoghue
Marion Eggertsen
Juliet Ellery
Maryka and George Hoover
Friends of Planned Parenthood
Joyce and Rick Ross

Dr. Jerry Schneider and
Elaine Schneider
Maxine Snyder
Jan S. Tuttleman
Beryl E. Young

President's Circle (\$1,000-\$2,499)

Linda M. and Dan Allen
Joyce F. Axelrod
Mona Baumgartel and John DeBeer
George and Constance Beardsley
Mr. and Mrs. Robert N. Berk
Drs. Lisa Braun-Glazer and
Jeffrey Glazer
Julie and Noah Bretz
Althea Brimm
Lynn and Michael Bruser
Christa Burke Dittmer and
Walt Dittmer
Jill and Jack Campbell
Harry and Sandra Carter
Center for Community Solutions
Ms. Gale Chan
Randy Clark and Tom Maddox, M.D.
Carolyn and Steven Conner
Christy Corbin
Credo/Working Assets Inc.
Len and Kim Dodson
F. F. Drukey
Ms. Marlene Y. Ebert
Susan Ebner and Jack Farnan
Dr. Bernard Eggersten and
Ms. Florence Nemkov
Sue Elam
Donna Jill Ellis and
C. Judson Westover
Mary Ann and Bud Emerson
Cynthia D. Erb
Evofem Inc.
Anne and David Fege
John and Denise Ford
Foundation for Change
Minoru Fukuda, Ph.D.
Susan and Steven Garfin
Drs. Lawrence M. and
Carol B. Gartner
Gen-Probe Incorporated
Alex and Marianne Grossman
Frank Gutterman
Lu Ann Hall and Allen Sweet
Alexa Kirkwood Hirsch

Isaac Hirschbien and
Kathy Beitscher
Holland's Bicycles
Mr. and Mrs. Albert Holm
Monica Hoover
Scott Horsley
Ms. Marjorie Howard-Jones
Mr. and Mrs. Anthony Huang
Denise and Cheney Hunt
Marjorie A. Huntington
Marla and John Jensen
Rudolph A. Johnson, III
Mr. and Mrs. Charles Kakos
Jerald and Marge Katleman
Julia Kenyon
Mr. and Mrs. Martin Klitzner
Barbara Lee and Daniel Yankelovich
William and Suzann Leininger
Yolanda and Dana Levy
Lois H. Lewis
George and Karen Longstreth
Barbara and Mathew Loonin
Edward and Nancy Lyon
Ms. Leanne Hull MacDougall and
Dr. Donald Dalessio
Mark and Barbara Maisel
Marcia and Michael Martin
Betty J. Mason
Anne and Andy McCammon
Nathan S. McCay
Ann McGowan-Tuskes
Mr. and Mrs. James L. McMillan
Mrs. Christa M. McReynolds
John D. Messner
Rhonda S. Meyer
Laurie Michaels and Harold Couglar
Laura and Eric Michelsen
Bryce E. Miller, M.D.
Mr. and Mrs. Stephen Miller
Montesguieu Winery
Margaret Moody
Maggie and Wayne Myers
Timothy and Jennifer O'Connell
Catherine Palmer
Mildred Pilot
Carol Plantamura and Felix Prael
Arlene and Ronald Prater
Allison and Robert Price
Quest Diagnostics
Marylu and Walter Raushenbush
Miyoko and Mitchell Reff
Jeannie P. Rivkin
Rivkin Family Foundation

Dr. Linda Rothschild and
Dr. Salah Bauouendi
Loni Rush
Don and Cynthia Rushing
Samadhi Research Institute
San Diego Coastkeeper
San Diego LGBT Community Center
Bob and Sheryl Scarano
Dr. Jerry Schneider and
Elaine Schneider
Judy and Marc Schuckit
Mr. and Mrs. Robert W. Schulze
Schwab Fund for Charitable Giving
Annette Seppanen and Curtis Nelson
Jan and Ken Shipstead
Abby Silverman Weiss and Ray Weiss
Ruth L. Siteman
Dr. Charles Smoot and
Mr. Kevin Winger
Dr. and Mrs. Roger G. Spragg
Keren Stashower and Ronald Marcus
Drs. Jeanne P. and
Donald D. Stevenson
Dr. Rosemary Straley
Elizabeth Studebaker and
Bruce Reznik
Paula Taylor and Bernard Kulchin
UCSD Department of Reproductive
Medicine
United Way of Capital Region
Lisa Walters-Hoffert
Sam and Michele Ward
Drs. Linda and Stephen Wasserman
Jane Weiss
James E. and Kathryn A. Whistler
Marilyn Wilson
Dr. and Mrs. Michael Ziegler

Sponsor Circle (\$500-\$999)

Gus Abadjis
Jeffrey and Delsee Altman
Judith M. Anderson
Anthem Blue Cross
Bailey Gardiner, Inc.
Donald and Gail Bamber
Jean Bark
Bruce and Patricia Becker
Mr. and Mrs. Vincent Biondo
Charles and Charlotte Bird
Barbara Bloom
Ronald J. Bloom
Bernys Jo Borun

Aaron Brennan
Catherine Bristow and
Robert Church
Robert M. Brower
Amie Brown and Alan Lewis
Ann Morley Carmel
Center for Policy Initiatives
Community Health Charities
Dr. and Mrs. Steven Constable
Creative Fusion
Anna M. Curren
Toni Davies
Veronica Dela Rosa
Dr. and Mrs. William DeRisi
Dan and Kim Dotson
Linda and Kestutis Dovydaitis
Mr. George T. Edmiston
William Eiffert and Leslie Hodge
Phyllis Epstein
Jill and Bernard Esrock
Dorothy Ann Fanestil
Sunni L. Farkas
Richard D. Farrar
Alan and Pauline Fatayerji
Dr. and Mrs. Steven Feitelberg
Seymour and Muriel Filman
E. Peter and Joyce Geiduschek
Joan D. Glatthorn, Esq. and
Joseph Lasensky
Mr. and Mrs. Michael Golstein
Goodrich, Rohr Employees'
Will-Share Club
Delores L. Gordon
Leonard and Barbara Gosink
Allen Hall and Louise Focht
Elma F. Harmston
Jacqueline B. Hart
Laurel J. Henderson
Susanne Henie
John and Viola Horn
IBM Employee Services Center
Jean C. Immenschuh
Dr. Adrian Jaffer and Ann Laddon
Betsy Lehman Levisay
Arleen Lettas
Barbara Major and Richard Gluck
Nancy Marlin and Fred Kolkhorst
Sarah Mattson Weller
Mr. and Mrs. Michael B. McMahon
Laurel F. McMenamain
Frank Mead
Ann Menachery
Ms. Katherine W. Merten
Scott W. and Jean Molentin

Deborah C. Mulvey
Dr. Cameron Campbell and
Ms. Dixie Newman
Sherry Nooravi
Norma Ojeda, Ph.D.
Gayle D. Paddison
Pfizer, Inc.
Penelope Phillips
Dr. and Mrs. David M. Priver
Dawn P. Puraty
Robert and Joan Reese
Mr. and Mrs. Glenn Reynolds
Robin S. Roulette
Betsy and Lea Rudee
Patricia Ryan
Christy and Timothy Saltonstall
Donald and Nancy Sandweiss
Erin Searfoss
Secure 1 Security
Judith Sherman
William and Elizabeth Sherry
Judith T. Silver
Deanna and Richard Spehn
Linda T. Stetson
Mr. and Mrs. Harold Stone
Phoebe S. Telser
Truist
Dr. and Mrs. Richard Ulevitch
United E-Way
Joan and Pieter Vandenberg
Patricia and Max Warren
Cindy Weigle
Judith Wenker
Ms. Judith L. White
Brian B. Wilson
Peter and Donna Worcester
Wendy Youngren

Advocate Circle
(\$100-\$499)

Henry Abarbanel and Beth Levine
Jodi Abel
Adele Abrahamsen and
William Bechtel
Mr. and Mrs. George E. Agnew
Megan Ahn
Mr. and Mrs. Daniel T. Allen
Drs. Michael and Edith Allen
Barbara J. Alley
Michelle Allison, J.D.
Deena Altman
Betty Anderson
Bogi Anderson and Hilda Thorisdottir

Marilyn Anderson
Angel Thai Cuisine
Rashad Ansari, M.D. and
Pamela Itkin-Ansari, Ph.D.
Mr. and Mrs. Gordon Archibald
Virginia L. Armbrust
Fran and Tom Atchinson
Toni Atkins
Dr. Jim Back
Drs. Varda and George Backus
Barbara Baehr
Thomas Baldwin and Miriam Ziegler
Kevin Ball
Mr. and Mrs. Michael Bardin
David and Peggy Barker
Robert Barmeyer, M.D.
Walter and Marion Barrett
Elizabeth Barrett-Connor and
James Connor
Catherine Barrios
Sandra D. Barstow
Teresa A. Barth
Jarka Bartl
Rand and Susan Batterton
Dr. Diane Baxter
Luann Beacom
Tina Becharas
Cheri G. Beckerle
Candace C. Beckwith
Mary Beebe and Charles Reilly
Jane and Thomas Beers
Mr. and Mrs. David Beith
Don Belcher
Marsden Benepe
Pat Benson
Laura Berend and Bill Zeigler
John and Margot Berg
Wolfgang and Karen Berger
Isaac Berk
Lisa Berlanga
Jo Ann Berman
Paul and Judith Bernstein
Brian Berson
Mr. and Mrs. Michael P. Biberstein
Roger Bieri
Louise Bilezikjian
Mark Laffoon and Maya Binun
Susan J. Blackwell
Jill Blaemers
Estela Blanco
Susan Blitz
Ann S. Block
Barbara W. Blomgren
Sherry and Marty Bloom

Amy Blum and David Zubkoff
Debbie Blum
Sarah W. Boddy
Robert Boeller
Thelma P. Bolam
Harrison Bolter
Debi Bonez
Celine Bonnefous
Bennett Borer and Susan Kephart
Mary Chidester Borevitz and
Richard Borevitz
Gloria K. Bowker
Tanya P. Boyaniwsky
Dr. William and Lorraine Boyce
Jane Boyd and Peter Koeppe
Dr. Sam Bozette
Lana Bradley
Sandra Braff
Bhoomi Brahmhatt, M.D.
Hortensia Bram
Susan Braun
Mona Brehm
Deborah and Daniel Brennan
Mr. and Mrs. George Brewster
Stefana Brintzenhoff
Dr. William M. Bristow
David W. Brody
Jo Brooks
Frank A. Brown
Houston Brown and Gina Lamb
Kapualani Brown
Maureen and Charles Brown
Pauline and Edwin Brown
Loyce Bruce
Constance Brunig and David Wexler
Elizabeth E. Bruton
Amy Brutto
Dan B. Buker
Mr. and Mrs. George Bullette
Jill Burkhardt and Bill Vornsand
Francine Busby
Dr. Robert E. Bushman
Anita Busquets
Suzi Bustamante
Mara Caler
Mary Ann Calhoun and Scott Francis
Linda and Edgar Canada
Jan Carpenter
Mr. and Mrs. Christopher Carpenter
Irene Carr
Ralph and Gwen Carrier
Dr. and Mrs. Richard Carson
J. Michael Caruthers
Patricia and Michael Casey

Kerry and Paisley Cato
Debra Chaddock
Lynne Champagne
Dean N. Chantiles
Phyllis Charlton
Christine Chatfield
Dr. George Kung and Jean Cheng
Valerie Chereskin and Jay Hansen
Amy Cheshire and Steven Jaye
Susan and Stephen Childs
Vickie L. Church
Shirley Churgin
Alan Clark
Melody Clark
Joseph P. Clarke
Susanna E. Coade
Rachel Cobb
Barbara Cogburn
Margo Cohen, NP
Alison Coil
Kristen Cole
Lindsey Cole
Michael and Sheila Cole
Margaret Coleman
Jana Collier and Chris Nordby
Dr. and Mrs. David Collins
Ronald and Nancy Collins
Claudia Comins and
Robert Friedman
Congregation Beth Israel of
San Diego
Pamela and Michael Connolly
Pamela A. Cooke
Patricia Cornelius and Joe Cooke
Marilyn Cornell
Natasha Cortina
Ann Cottrell
Janet Coulon
Mr. and Mrs. Jay D. Coulter
Jane Coutts
Heather E. Cowan
Barbara Cox
Gigi Cramer
Mr. and Mrs. Loch Crane
Phillip Crane, Jr. and
Rosemary Pratt Crane
The Honorable Crystal Crawford
Cheryl Creagh
Darlee J. Crockett
Jacqueline Crowle and Charles Scott
Rebecca and Michael Crowley
Mary Cruz
Joan P. Cudhea
Dr. Pamela H. Daener

John Dahl
Gary and Denise David
Joan M. Davis
Dr. Steven J. and Mrs. Susan Davis
Suzanne De LaVergne, Ph.D.
Gary and Betty DeBusschere
Sophia Dehof and Thomas Ryll
Jeffrey DeJong and Ruth McBeth
Joy Delman
Martha G. Dennis
Judith DeNooy
Charles Dexter
Cindy Dickinson
Dr. Brian Dicks and Dr. Erin Gross
Katherine R. DiFrancesca, Ph.D.
Keira K. Dillon
John and Susan Dilustro
Masada Disenhouse
Nicholas E. Dobbs
Ellen Dodson
Mr. and Mrs. John Donald
Kimberly Dotseth
Mr. and Mrs. David Downs
Jeanine M. Dreifuss
Charles and Suzan Driscoll
Daniel P. Drogichen
Julie and Mitchell Dubick
Richard Dubielzig
Teyie M. Duenez
Dr. Russell and Mrs. Eloise Duff
Nicola Duggan
Margaret E. Dunbar
Ross and Jeanne Dunn
Lizbeth A. Ecke
Edison International
Byron and Marcia Edwards
Byrne Eger
Charles Ellinwood
Dr. and Mrs. Max Elliot
John Elsner
Janice Elster
Mr. and Mrs. Ronald L. Endeman
Betty Engel and Michael Lubin
Devon Ericson
Mrs. Jeane F. Erley
Lynn Escajeda
Cindy Estes
Edward Etes and
Becki Lamont Etes
John and Cynthia Evans
Virginia Eves
Pamela J. Fair
Brenda Fake
Roberta L. Fanin

Karyn S. Farr
Rhonda and Nigel Farrar
Pamela Farrell
Kathy Farrelly
Judy Feldman
Susan Feldman
James Fenningham and Janet Arnold
Mary Ellen Ferguson
Lois S. Fetzner
Diane and Elliot Feuerstein
Fidelity Charitable Gift Fund
Kathryn Field
Dr. and Mrs. Irving Fine
Bambi Lin Finney
Dieter and Susan Fischer
Dr. Julie Fischer
Cissy Fisher
Lisa Fisher and David Held
Judy and Ted Fitzsimmons
Mary Fjerstad
Drs. Jacquelyn and John Flaskerud
Elyse and David Fleming
Karen Fleming
Jeff Flynn
Laura Foster
Velia M. Fowler
Laurie Fox
Lynn Franco-Chow
Marion Garver Fredrickson
Charles Freedman, M.D.
Linda Freeman
Sherley Freudenberger, M.D.
Joan Friedenbergl
Robin R. Friedheim
Florence Friedman
Dr. Lawrence S. Friedman
Paul and Elizabeth Friedman
Jessica Frripp
Deborah Fritsch and Pat Boyce
Kim Fritz
Arnost and Kitty Fronck
Fusion Storm
Eugene M. Gabrych
Jill A. Galante
Nancy C. Gall
Victoria L. Gallagher
Claudia Galvez
Robert Garber
Marjorie P. Garcia
Drs. Edwin and Wita Gardiner
Paul T. Gaughen
Gretchen M. Gerlach
Darlene and Eugene Gerow
John and Mary Giebink

Constance Giffen
Sandford J. Gillett
Frances D. Gillin
James Gilmore and Cameron James
Alan Gin
Mary Ann Glatt
Mr. and Mrs. Alan Gleicher
Shelby P. Goad
Kristin Godfredson
Cynthia J. Godinez
Steven Golbus, M.D.
Dr. Norman J. Goldberg
Juliana Golden
Patricia N. Goldhamer
Arlene Golds
Meg Goldstein
Marcy Goldstone
Julie Gollin
Michael and Patricia Gollong
Barbara B. Goltz
Linda E. Gonzalez
Martha Gonzalez and Matthew Price
Kim Marie Goodwin
Edwin and Donna Gookin
Mrs. Joan and Dr. Bernard Goott
Ann Gould
Susan H. Goulian
Kristen Gozawa
Jerri and Thomas Grady
Gregory N. Grajek
Jacqueline Gray
Marti A. Gray
Dinia C. and Lloyd L. Green
Julie Greenberg and Robert Irving
Bennet B. Greenwald
Linda G. Griffin
Sharon Grodner and
Marc Lewkowicz
Nannette H. Guerin
Jo Guinn
Rick and Tory Gulley
Kay and Bill Gurtin
Jennifer Gutschmidt
Ruth Ann Hageman
Vincent H. Hall
Dr. Marian V. Hamburg
Mr. and Mrs. Daniel Hamlin
Dan and Shelley Hammer
Danielle Hammerman
Juliane Hampton and Paul Ecke, III
Janet Hanpeter
Dr. and Mrs. Jerry Hansen
Heidi S. Hansen
Elaine M. Hanson

Mary and Jay Hanson
Karen and Mark Hanten
Suzanne Harmatz
Janet Harris
Stephen B. Harris, Ph.D.
Kay and Phillip Harry
Carol A. Harter, M.D.
Sue Hartley
Bonnie Hartmeyer-Hankley
Helen Hatfield
Richard and Betsy Haubrich
John and Leticia Haxall
Kathleen M. Hayes
Stanley and Peggy Hayward
Marcia Hazan
Lynne S. Heacock
Richard Heckman
Lesa Heebner
Joyce L. Hein
Dr. and Mrs. Donald Heinrich
April F. Heinze
Susan and Walter Heiser
Joan Helland
Roxane W. Helstrom
Margo Hemond
Mr. W. W. Henderson
Molly Henry and Donald Fisher
Kae A. Hensey
Dr. Bonnie Hepburn
Lyla Zoe Herald
Mr. and Mrs. Leonard Herman
Dede Herst and Dennis Cook, M.D.
Allyson Hertzog
Karla Hertzog
Danielle Hickman
Dan Hildebrand and
Marge Kleinsmith-Hildebrand
Albert and Joanne Hill
Steve and Kathy Hillan
Mr. and Mrs. Philip Hoadley
Louis Hock
Gayle and Charles Hodges
Katherine Hodges
Lois B. Hodik
Ann M. Hoepfner
Mr. and Mrs. Kenneth D. Holland
Mr. and Mrs. Lindsay Holland
Mr. and Mrs. David Hollings
Mark Horton and Mary Ann Miller
Robert and Maryanne House
HP Company Foundation
Barbara L. Hunter
Holly Hurwitz
Virginia Huschke-Brown

Virginia Hyde
David and Therese Hymer
Kenji and Leslie Ima
Iron Mountain
Dr. and Mrs. Charles Jablecki
Joan S. Jacobs
Pat JaCoby
Doriann and Richard Jaffee
Margareta Jansson
Emily and Chris Jennewein
George C. Jessop, Jr.
Marileen Johnson
Nancy Johnson
Sheila K. Johnson
Allyn M. Johnston
Jeff Johnston
Michael E. Jones
Becky Jonestrask
Robert and Linda Juhasz
Julie M. Jura
Galen Justice
Sue and Lyle Kalish
Kim Kane and Dean Peabody
Dr. and Mrs. Lee Kaplan
Ruth E. Kaplan
Vicki Karinen-Irvine
Beth Ann Kelso
Roberta J. Kenison
Ruth B. Kerman
Amy Kimball
Kathleen Kinane
Jessica Kingston, M.D.
Kathleen D. Kirkpatrick
Jennifer E. Kish
Janet Klauber
Robert and Evelyn Klees
Carol Klepper
Joan E. Kline
Nae Klostermann
Larry Rosenstock and Jean Kluver
Joe Knepper
Carrie Knowles-Law
Mariette Kobrak
Alex and Claire Kononchuk
Susan Kornbacher
Martha and Jerry Krasne
Ellen Kroninger
Jennifer Kuhlman
Lynn Kuhns-Hughes
Sonia and Gustavo Kuster
Lisa J. Kutner, M.D.
Mr. and Mrs. Theodore Kwoh
Elizabeth Laats

Labor Council, AFL-CIO/
San Diego-Imperial Counties
Phyllis J. Laderman
Dr. Chris and Mrs. Monica Lafferty
Donna Lague
Elizabeth Lancaster, M.D. and
Eli Shefter, Ph.D.
Gillian Lancaster
Ruth Landaal
Shari Lander
Dianne E. Lane
Diane H. Langford
Robert and Susan Lapidus
James Lare and Jacquelyn McCoy
Tamara Larsen
Alan and Ruth Larson
Elizabeth Lasley
George and Carol Lattimer
Edward Law
Claudia Law-Greenberg
Jane G. Lazerow
Joanne G. Leidenberger
Jon Lelevier and Judy Teltscher
Rhoda F. Lemlein
Joel Lench, M.D.
Bonnie Lennon
Cmdr. and Mrs. R.H. Lenson
Michael and Karen Levinson
Marshall and Judy Lewis
Merle K. Lewis
Doug Liden
Lois Lighthart
Dr. and Mrs. Stuart Lipton
Sarah Livermore
Elissa and Mark Livingstone
Jacqueline Loaiza
Estelle and Hamilton M. Loeb
Michele Lolly and Brian Wilson
Mr. Paul Lonac and
Ms. Peggy Keigher
Mark W. LoPresti
Marge Lorang and Dr. John Spinosa
Keith R. Loss
Teri Louden
Nikki Love
Ronald Christensen and
Jeannie Lowe
Mr. and Mrs. Alfred Lutter
Nina P. MacConnel
Alan MacDougall and Josph Judge
Mrs. Catherine G. MacLaughlin
Mr. Matthew Davis and
Michele Macosky
Charles and Cathy Mador

Pamela A. Maher
Gail M. Maher Takach
Sivia and Norman Mann
Samantha Marcrum
Di Marcus
Vicki K. Markey
Louis and Kathleen Marquette
Mr. Terry A. Marsh
Marsh Risk and Insurance Services
Barbara and Norman Marshall
Margaret Marston
Mr. and Mrs. Ted Martinez
Iris P. Masotti
Katherine E. Matheron
Robert F. Mathers
Mr. and Mrs. Henry McAdams
David McAtee
Eleanor McCardle
Gloria McCarter
Alice B. McCauley
Wallace M. McCloskey
Janet McClure
Hollace and Holly McCormick
Mr. and Mrs. Harry McCune, Jr.
Dr. and Mrs. J. A. McCutchan
Loren R. McDermott
Brian P. McDonald
Judy McDonald
Sarah McDonald
Christopher McEniry
Louis McGlasson
Courtenay McGowen
Karen A. McGurk
Kiril McKee
Holly McMillan
Lynn McNeal
Kathy Meagher
Bridget Meckley
Jose Medina and Linda Fregoso
James D. Mees
Everett C. Mehner
James and Melanie Menders
Mr. and Mrs. Sam Messin
Linda and James Michael
Laurie Michaels and Harold Couglar
Beth Miller
Christine Miller
Sally and David Miller
Jenie and James Milliken
Mary L. Minshall
Mark and Pamela Mitchell
Martha and Charles Moffett
Beth Kuehn Monge
Henry M. and Constance H. Moore

Maureen L. Moore
Cira Morey
Donald and Rita Morgan
Phyllis Morris
Sally Mowry
Janice P. Muller
Patricia and David Mundy
Dr. Walter Munk
David Muscat
Mr. Sekhar Nadimpalli
Dr. and Mrs. Charles Nager
Kotaro and Katherine Nakamura
Scott and Julie Nearingard
Mrs. Mary C. Nelson
Dr. Robert and
Mrs. Barbara Nemiroff
William and Tracy Neumann
Catherine D. Nicholas
Matthew Nieder
Janie A. Noon
Norscan Medical
Sharon Novak
Mr. and Mrs. James Nuzzi
Kate Nyce
Candace B. Obetz
Nanci Oechsle
Jenny Oehler
Mrs. Doraine B. Offerman
Michael T. O'Halloran and
Margaret M. Mann
Julie and Dan Olfe
Samantha S. Ollinger
George and Cindy Olmstead
Jo Ann Onishi-Mogg and Robert Mogg
Donald J. Orahood
Laurie Orange
Cinde Ordelheide
Elizabeth Orr
Catherine M. Orth
Mr. Artie M. Owen
Dr. and Mrs. Lewis A. Palmer
Mark Parisi and Mary Johnson
Edith Parker
Dr. Robert Dynes and
Ann Parode Dynes
Laura H. Parsky
Mr. and Mrs. Hugh Pates
David and Staci Pawlowski
Tom and Ellen Payzant
Mary M. Pennell
William and Clarice Perkins
Mr. and Mrs. Gordon Perkins
Charles and Marilyn Perrin
Maurice Pessot

David Petry
Ms. Rio H. Phair
Ann Phung
Sandra K. Piccillo
Jill Pierce
Mr. and Mrs. Stephen Pierce
Cynthia and Lorne Polger
Sandra Jassman Polster
Marlene Pommerenke
Mr. and Mrs. Carl Pope, III
Ann Poppe
Heinz and Beth Poppendiek
Ruth F. Potter
Erin Preston
Timothy M. Price
David Prickett and Jill Davis-Prickett
John Pryor
Mr. and Mrs. Robert Quade
Diane E. Quinn
Luanna H. Quirk
Ronald and Joyce Rabens
Peter and Jane Radatz
Alice S. Raines
Vidhya Ramachandran
Susan Randerson
Kathryn F. Rangus
Monte and Paula Reed
Debra L. Reid
Patricia M. Reilly
Mr. and Mrs. David Reith
Kathleen M. Renne
Serge Rey and Janet Franklin
Sharon Rhodes
Robert Butterfield and
Judith Richards
Paula M. Roach
Patricia Robbins
Kim Roberts
Dr. Lauren Robertson
Nancy J. Robertson
Leslie Robins
Mr. and Mrs. Paul Robotta
Lila S. Rockstein
Carolyn L. Roeters
Mary B. Rose
Dr. Marcus Rosencrantz and
Dr. Emily Whitcomb
Kathleen Rosenow
Paula Rosenstein
Scott C. Carr and Heather L. Rosing
Paula Rotenberg
Marcie Rothman
Michael Rothmuller
Laura Rotter and Clay Shinn

James Royle, Jr.
Margaret S. Ruben
Mr. and Mrs. D. Richard Rudolf
Donald Rutherford and
Madeleine Picciotto
Barbara and Frank Ryan
Dr. Donald W. Ryan
Amy M. Rypins
Marcia Sachs
Dr. and Mrs. Anthony Sacks
Gerrard and Brigitte Salomon
Rene Salter
Jennifer San Jose
Mr. and Mrs. Clark N. Sandknop
Adaline H. Sanford
Nancy Sasaki
Stacey Sasaki
Ursula R. Sasso
Leslie E. Satz
Patricia A. Saunders
Geri L. Savitt
Laurence and Phyllis Sawyer
Mrs. Mary Lou Saylor
Anne Schafer
Lyle E. Schaffer
Marjorie Schane
A. Jack Schaps
Shari Schenk
Barry and Linda Scher
Johanna Schiavoni
Patricia L. Schmidt
Dr. and Mrs. R. Larry Schmitt
Richard Schmitz and
Barbara Lavinio-Schmitz
Elizabeth G. Schock
Tina and Craig Schopp
V. John Schroeder, Jr.
Wayne and Diane Schroeder
Judy Schrosk
Richard Schulman
Gabriel Schuyler
Margaret Z. Schwartz
Rosalie Schwartz
Ross and Audrey Schwartz
Ruth Schwartz
Craig Scott
Richard F. Seaman, Jr.
Erin Searfoss
Veronica J. Seay
Kelly Seiler
Melvin Selzer, M.D.
Martha Sexton
Dr. Majorie E. Seybold
Cora Sharp

Jerome and Carolyn Sharpe
Robert Sheffres and
Karen McClurg Sheffres
Valerie N. Sheline, M.D.
Joyce Shepard
Thomas Shey
Steven and Lynn Shields
Barbara Shroyer
Stephen C. Shubert
Susan H. Shuchter, M.D.
Ellen Shuck and Peter Haley
Goody Sibold
Barbara Siesel
Frank Silva
Virginia and Don Simmons
Mrs. Ann R. Sixtus
Thomas A. Sklenar
Laurel Slater
Lynne B. Small
Mark and April Smith
David D. Smith
Harry Smith
James H. Smith
Kwan-Lok and Miu-Lam So
Herbert and Elene Solomon
Saundra S. Somach
Karen Nicholson Sommers
Donald and Peggy Spanninga
Nancy and Alan Spector
Dr. Stephen A. and
Mrs. Deborah Spector
Dr. Hans and Mrs.
Elisabeth Spiegelberg
William W. Spore, M.D.
Patricia Springer
Dr. and Mrs. Peter St. Louis
Mr. Ivar Stakgold
Maureen A. Stapleton
Molly Stark
Dorothy Stein
Robert and Carol Stein
Mary H. Stephens
Sheila L. Sterling
Charlotte Stern
Ruth Stern
Dr. and Mrs. Charles Stevens
Mary Ann F. Stewart
Michele A. Stewart, M.D.
Steffanie Strathdee
Joyce and Ted Strauss
Jean Strouf
Stephen and Judy Sundquist
Margery Swanson
Tom Tabor

Michele Tamayo
Elizabeth Taylor
Timothy P. Taylor
Gregory Wiener and
Trina Taylor-Wiener
Marjorie Teal
Sydell Templin
The Student Bar Association
Robin Theilmann
Gail C. Thomas
Dr. and Mrs. Oliver Thomas
William Thomas
Evelyn L. Thomson
Nancy Tietge
Alma Timmins
Laurel Todd
Lee Tollefson
Mr. and Mrs. Michael Townsend
Tractor Room
Paul and Marilyn Traum
Neil W. Treister, M.D.
Glenn Triemstra
Benjamin and Sheila Trovaten
Eugene and Emily Troxell
Robert Underhill
United Way of Delaware
United Way of Greater Battle Creek
United Way of Southeastern
Pennsylvania
Patricia M. Vainik
Stacey Valencia
Diana and Matthew Valji
Nora E. Vargas
Ingrid E. Varon
C. Anne Vaughn
Antoinette Velasquez
Laurette Verbinski
Joseph and Deborah Verfaillie
Larry Verity
Steven and Kristen Victor
John Videen
Elizabeth Visnyak
Ann W. Volimas
Carl Votolato
Patricia Wagner
Dr. and Mrs. Richard Wagner
Joan L. Waite
Richard and Jeanne Waite
Kathleen Waldvogel
James Walker
Shirley A. Walkoe
Ginita Wall
Yia Y. Wang
Thomas and Carol Warschauer

Lowell Waxman
Karen Weatherson and
Anniessa Mumford
Shirley L. Weaver
Samantha L. Weber
Kersten Wehde
Kristina and John Weinman
Mae Weinstein
Sharon Weintraub
Joann and Eric Weitzen
WellPoint Foundation
Leland and June Welsh
William and Margaret Wernett
Mr. and Mrs. Edgar Wessel
Mr. and Mrs. John Wheaton
Barbara and Ted Wheeler
Karin Whiting
Mr. and Mrs. Adam Whitlock
Judith Wiesberg
Alan Wiley
Mr. and Mrs. Robert B. Wilkinson
Mr. and Mrs. Sam Williams
Pamela S. Williams
Ruth E. Williams
Valarie Williams
Terri Wilmoth-Olson
Anne B. Wilson
Diann Wilson
Ellen and Gregg Wilson
Will and Claudette Wilson
John R. Wingert
Julie E. Winger
Claire Wise
Virginia Wofford
Arelene Wolinski
Wallace S. Yagi
June Yang
Annette York
Candace Young-Schult and
Roy Schult
Sheldon B. Zablow, M.D.
Ann L. Zahner
Janet E. Zanville
Mr. and Mrs. Boris Zelkind
Lora G. Zilinsky
Cheri Zinser
Susan and Paul Zlotnik
Maria Luisa Zuniga
Dr. Judith Zyskind and
Douglas Smith

List as of 12/31/2010

Legacy Circle



Legacy Circle

Ensuring the long-term stability of Planned Parenthood of the Pacific Southwest through charitable planned gifts.

Legacy Circle

Anonymous (20)
Hedy Aardema
K. Andrew Achterkirchen
Joyce F. Axelrod
Sandra D. Barstow
Laura Berend & Bill Zeigler
Joan Bernstein
Beverly Boggs
Billie Bowen
Lorraine & William Boyce
William M. Bristow
Cynthia C. Carpenter
Richard & Julia Carson
Eileen M. Clause
Don & Betty Copp
Patricia Cornelius
Amy Corton & Carl Eibl
Darlee J. Crockett
Jacqueline Crowle & Charles Scott
Joan P. Cudhea
Joan Davis
Judith deNooy
Charles Dicken
Joan Dixon
Marion & Frank* Dixon
Marlene Y. Ebert
Susan Ebner

Elisabeth (Jinx) Ecke
Margaret J. Elliott
Herb Engel
Anne D. Ewing
Suzanne Finch
Susanna and Michael Flaster
Vaughdean Forbes
Robin R. Friedheim
Deborah Fritsch & Pat Boyce
Marcy Goldstone
Carol L. Grimes
Kay & Phillip Harry
Kae Hensey
Ingrid Hibbin
Rosanne & Joel Holliday
David & Corrine Hollings
Hugh C. Hyde
Ruth Ireland
Beth Faber Jacobs
Margaret Jacobs
Howard Jacoby
Marla & John Jensen
Dori & Charles Kaufman
Philip M. Klauber
Frances Klipper
Nora La Corte, Ph.D.
Alva Lane
Betty* & Ed Law
Vadee Lee
Merle K. Lewis

Dorothy Lindberg
George & Karen Longstreth
Tracy Loughridge
Leanne Hull MacDougall
Terry A. Marsh
Alice McCauley
Joseph* & Betty McCosker
Bryce E. Miller, M.D.
Judith P. Miller
Ree & Maurice Miller
Sally S. Miller
Mary L. Minshall
Victoria L. Moody-Geissler &
Richard Geissler
Dana Mosser
Jane Mullins
Edie Munk
Kathi W. Myers
Donald J. Orahood
Laurie Orange
Catherine M. Orth
Mr. & Mrs. Dewey Ostrom
Leonard Pellettiri
Helen M. Pendleton
Dr. Patricia D. Peterson
Robert Reese
Judy Reynard
Andrea Robinson
Julian Rogers
Anine Rohrer

Ruth Rollins
Dr. Beatrice Rose
Joyce & Rick Ross
Nancy & Donald Ross
Elliot & Eileen Schubert
Anna & Mario Scipione
Nadine L. Scott
Annette Seppanen & Curtis Nelson
Elizabeth Sherry
Helen S. Simmons
Jan Slater
Max B. Southwick
Sara Standerford
Terri J. Stearns
Dorothy Stein
Kathleen L. Strauss, Ph.D.
Stephanie Strout
Kathryn Sturch
Paula Taylor & Bernard Kulchin
Marjorie Tess
Verna Tinker Turner
Kristen Victor
Molli & Arthur Wagner, Ph.D.
Judith L. White
Marilyn & Stuart C. * Wilson
Barbara Wolter
Leslie S. Zoref

*deceased

List as of 12/31/2010

Please consider including Planned Parenthood of the Pacific Southwest in your will. The following language is suggested:

“I give, bequeath and devise (dollar amount or description of asset) to Planned Parenthood of the Pacific Southwest, now or formerly located at 1075 Camino del Rio South, San Diego, CA 92108, to be used for its general charitable purposes.”

Planned Parenthood of the Pacific Southwest is a tax-exempt organization. Any bequest is fully deductible for federal estate tax purposes. To plan a bequest for a specific purpose, please contact Pam Becker, Director of Major Gifts and Planned Giving at 619-881-4531, or email pbecker@planned.org.

Realized Bequests

Planned Parenthood of the Pacific Southwest offers sincere thanks to donors who are no longer with us yet continue to provide support through their estate plans as members of the Legacy Circle, founded in 1963.

Named Funds*

gifts of \$100,000 or more

Mildred & Burnett C. Wohlford

Carol Ash

Selby

Edward O'Toole

Carolyn Ann Ahlers

Josephine Carey

Annie Titlebaum-Schwartz

Ann Baerwald

Sandra Jeffers

Leiffer Family Endowment Fund

Louisa Kassler

Ruth Campbell

Anonymous

Roger Shaw

Barbara Ramsey & Sherry Henderson

Catherine Dorgan

Steven R. Prewitt

Marcella Coolidge

Ruth H. Milliken

Jack Epstein

Harold Rand

Muriel Adams

David & Pamela Carton

Elisabeth Boyer

Leslie Jane Hahn

Fannie and Lewis Fisher

Mary E. Harvey

Anne S. Hertzberg

Minna O. Cooper

Thomas & Helen Slaven

Margaret L. Caperton

Floyd D. Kauffmann

The Estates of the following people
made gifts to PPPSW in 2010:

Michael B. Eddy

Clyde A. Joslyn

Henry S. and Marietta W. Aurand

Bud and Polly Aldigé

Estate Gifts

Martha Ann Klimo

Lorenzo Dell'Armo

Jon Olson

Norma Sullivan

Frances Miner

William Plock

Wheller Trust

Mary Lou Swift Mantle

Shirley Bell

Yolanda Luney

*Planned Parenthood of the Pacific Southwest offers a special thanks to those deceased donors whose generous bequests of \$100,000 or more created a permanent fund in support of Planned Parenthood's programs.



First Avenue



Carlsbad



Chula Vista



City Heights



Coachella Valley



College Avenue



El Cajon



Escondido



Euclid Avenue



Kearny Mesa



Mira Mesa



Mission Bay



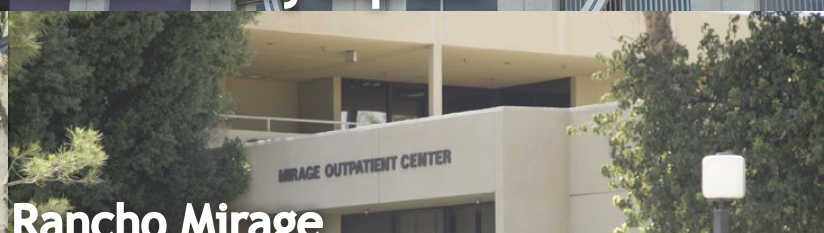
Moreno Valley



Mission Valley Express



Pacific Beach Express



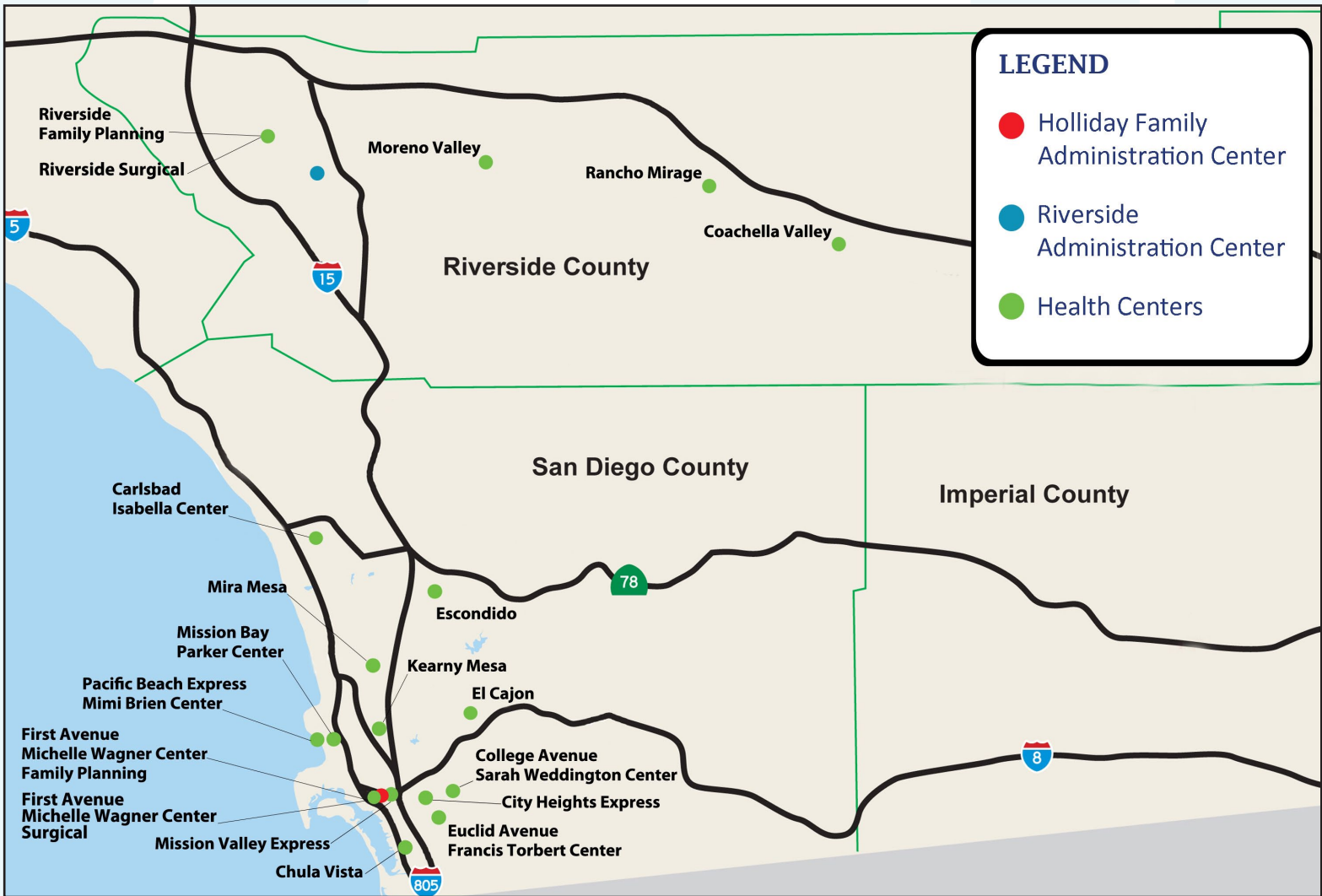
Rancho Mirage



Riverside

Planned Parenthood | WE'RE HERE.™

Planned Parenthood of the Pacific Southwest Administration & Health Centers Map



ADMINISTRATIVE OFFICES

**Holliday Family
Administration Center**
1075 Camino del Rio South
San Diego, CA 92108
619-881-4500

Riverside Administration Center
7899 Mission Grove Parkway South
Suite A
Riverside, CA 92508
951-222-3160

SAN DIEGO COUNTY & RIVERSIDE COUNTY HEALTH CENTERS
For appointments, please call 1-888-743-PLAN (7526)

HEALTH CENTERS

Carlsbad Isabella Center
1820 Marron Rd., #110
Carlsbad, CA 92008

Chula Vista
1295 Broadway, #201
Chula Vista, CA 91911

City Heights Express
4305 University Ave., #350
San Diego, CA 92105

Coachella Valley
49-111 Highway 111, #6
Coachella, CA 92236

**College Avenue
Sarah Weddington Center**
4575 College Ave.
San Diego, CA 92115

El Cajon
1685 E. Main St., #301
El Cajon, CA 92021

Escondido
347 W. Mission Ave.
Escondido, CA 92025

**Euclid Avenue
Francis Torbert Center**
220 Euclid Ave., #30
San Diego, CA 92114

**First Avenue
Michelle Wagner Center**
2017 First Ave.
San Diego, CA 92101
Family Planning: Suite 301
Surgical Services: Suite 100

Kearny Mesa
7526 Clairemont Mesa Blvd.
San Diego, CA 92111

Mira Mesa
10737 Camino Ruiz, #220
San Diego, CA 92126

Mission Bay Parker Center
4501 Mission Bay Dr., #1C
San Diego, CA 92109

Mission Valley Express
1333 Camino del Rio So., #306
San Diego, CA 92108

Moreno Valley
12900 Frederick St., Suite C
Moreno Valley, CA 92553

**Pacific Beach Express
Mimi Brien Center**
1602 Thomas Ave.
San Diego, CA 92109

Rancho Mirage
71777 San Jacinto Dr., #202
Rancho Mirage, CA 92270

**Riverside Family Planning
& Specialty Services**
3772 Tibbetts St.
Riverside, CA 92506