



FISCAL YEAR 2020

ANNUAL REPORT

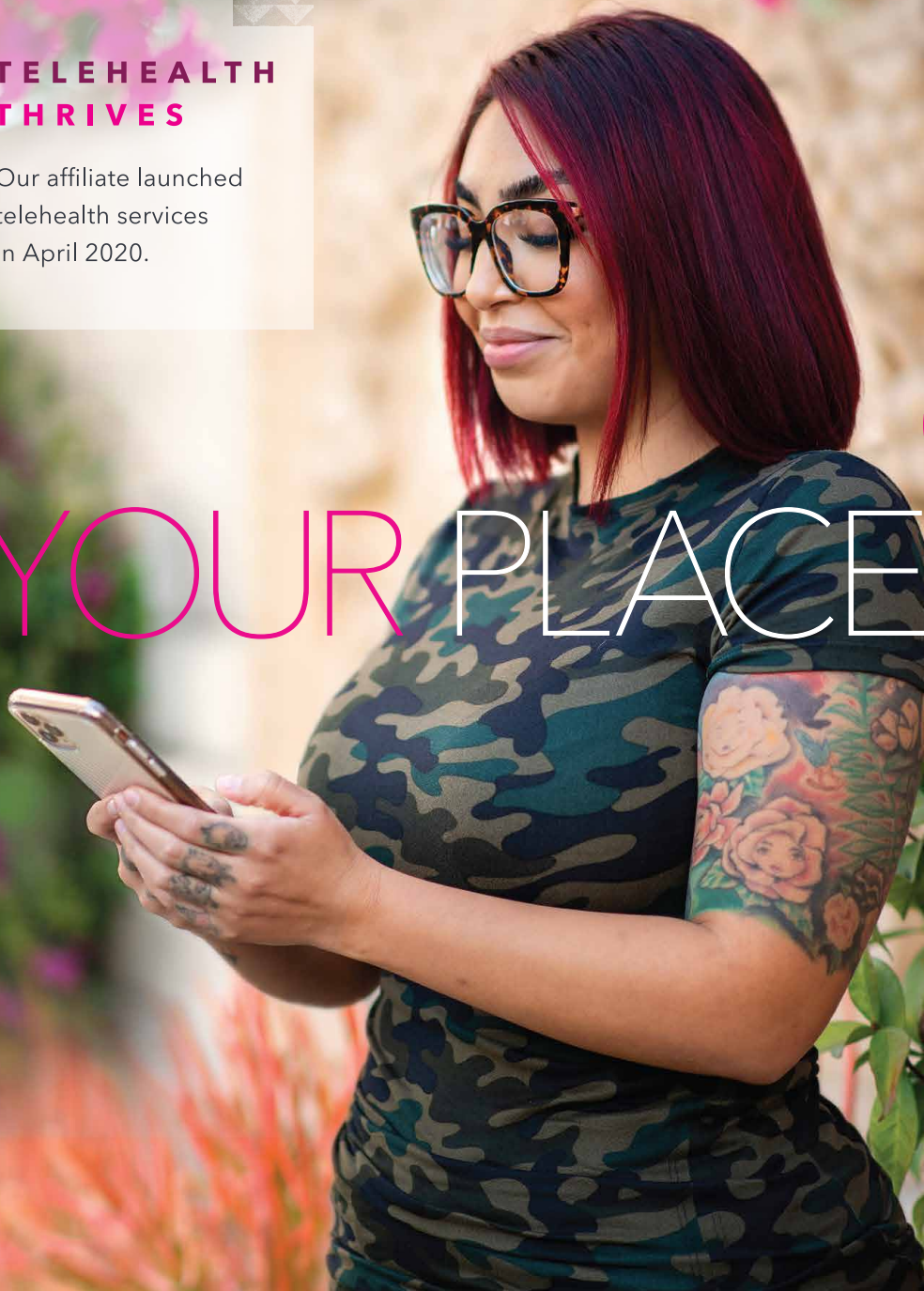
 **Planned
Parenthood**[®]
Pacific Southwest



TELEHEALTH THRIVES

Our affiliate launched telehealth services in April 2020.

YOUR PLACE



MISSION STATEMENT

The mission of Planned Parenthood of the Pacific Southwest is to ensure broad public access to sexual and reproductive health care through direct service, education, and advocacy.

OR OURS.





TABLE OF CONTENTS

FY 2020 Board of Directors & Executive Team	2
Message from CEO & Board Chair	3
Patient Demographics	4
Total Patient Visits & Contraception	8
Milestones	10
By the Numbers	18
Financial Overview	19
FY 2020 Donor Listings	20
Health Center Information	24





BOARD CHAIR

Kate Nyce

VICE CHAIR

Jennifer Levitt

TREASURER

James Williamson

SECRETARY

Angelov Farooq

BOARD MEMBERS

Jose Alcala

Jessica Ayala

Randy Clark

LaShae Collins

Amy Corton

Immediate-Past Chair

Philip Diamond, MD

Susanna Flaster

Rosette Garcia

Christy Holstege

Patricia McQuater

Marlene Millen, MD

Jacqueline Reynoso

Mona Sonnenshein

Naomi Soto

Mattheus Stephens

Teressa Vaughn

EX-OFFICIO MEMBERS

Bobbie Gilbert

Chair, Alumni Network

EXECUTIVE TEAM

Darrah DiGiorgio Johnson

President & CEO

Gary Zimble

Chief Operating Officer

Antoinette Marengo, MD

Chief Medical Officer

Keith Limberg

Vice President, Development

Rebecca Karpinski

Vice President, Strategy & Organizational Effectiveness

Cita Walsh

Vice President, Marketing & Communications

Cea Ishikawa

Vice President, Human Resources & Administrative Services

Francis Pickford

Vice President, Finance

Jill Pierce

Vice President, Health Center Operations

Janeen Burlison

Vice President, Clinical Services & Quality

Ruchi Sukhija

Vice President, IT & Project Management Office

Lori Keim

Vice President, Business Development

Vernita Gutierrez

Vice President, Community & Government Relations

Dear Friends,

RESILIENT.
STRONG.
IN SOLIDARITY.

At Planned Parenthood of the Pacific Southwest, our vision is a world where sexual and reproductive rights are basic human rights, where access to health care doesn't depend on who you are or where you live, and where every person has the opportunity to choose their own path to a meaningful life. Now more than ever, that vision guides the work we do.

When the COVID-19 crisis began upending lives and livelihoods, Planned Parenthood rose to the challenge. We swiftly launched telehealth services, providing virtual visits to better protect our patients and our staff. We migrated our education and training programs online to be able to continue delivering life-saving information to

young people. And we asked you to help us make it all happen. Once again, you came through.

This year, at 246,496 in-person and virtual appointments, we provided birth control services, testing and treatment for sexually transmitted infections, cancer screenings, and abortion. We offered compassion, expertise, and information free of judgment. We continued to make plans to expand and open new health centers in areas of great need, such as in Rancho Mirage and Hemet. And we advocated for policies that keep all members of our communities safe.

As the pandemic ravaged the globe, politicians across the country were exploiting the fear and urgency of the moment to target Planned Parenthood patients and restrict access to essential health care. But our purpose and our promise have never wavered: No matter the changes and challenges we face ahead, Planned Parenthood will be here for good.

This year marked 100 years since the 19th Amendment was ratified, protecting the right to vote for all women. But in practice, women of color remained disenfranchised for decades longer, while the health and safety of

people of color have been systematically and continuously threatened.

Building on our affiliate's values of equity and justice, and recognizing the public health crisis that racism represents, our affiliate's Commitment to Black Communities honors the calls to action made by Black women to advance racial and reproductive justice. Planned Parenthood has come a long way in 104 years—and we have much further to go.

This report details the work you helped make possible during this unusual year. What it doesn't show—what it could never do justice to—is the remarkable ripple effect your support has on the life of every person who relies on Planned Parenthood. Every one of the facts and figures in this report represents a more empowered patient, a more informed student, and a healthier home. Thank you for making our vision a reality.

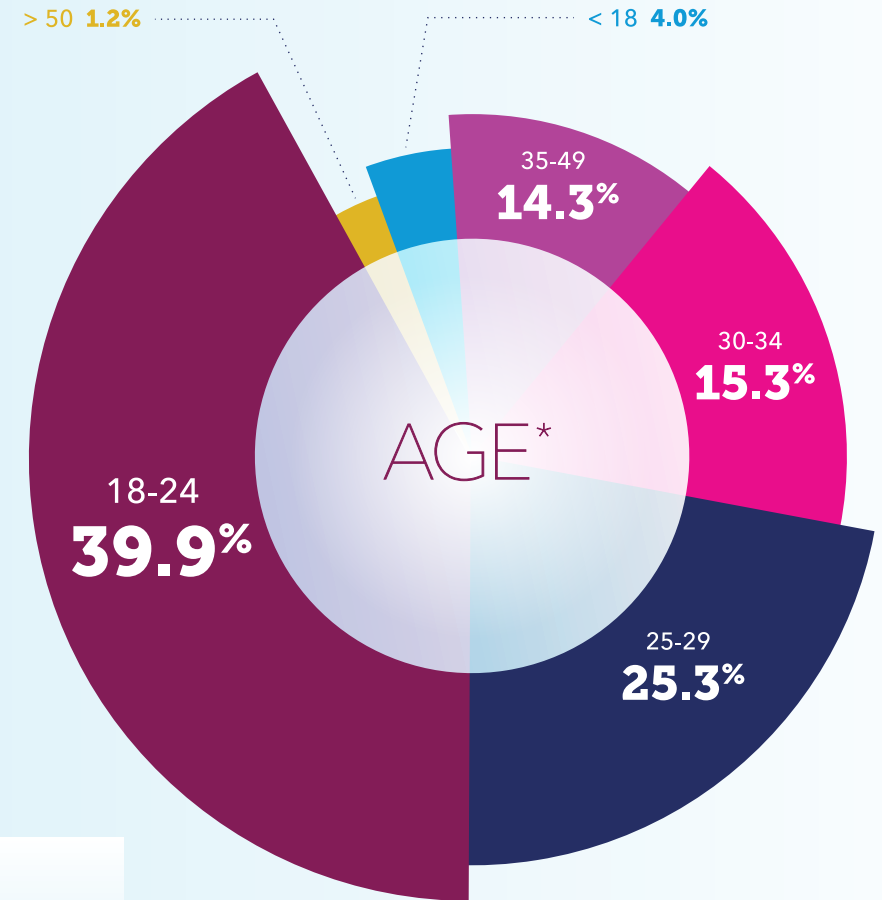
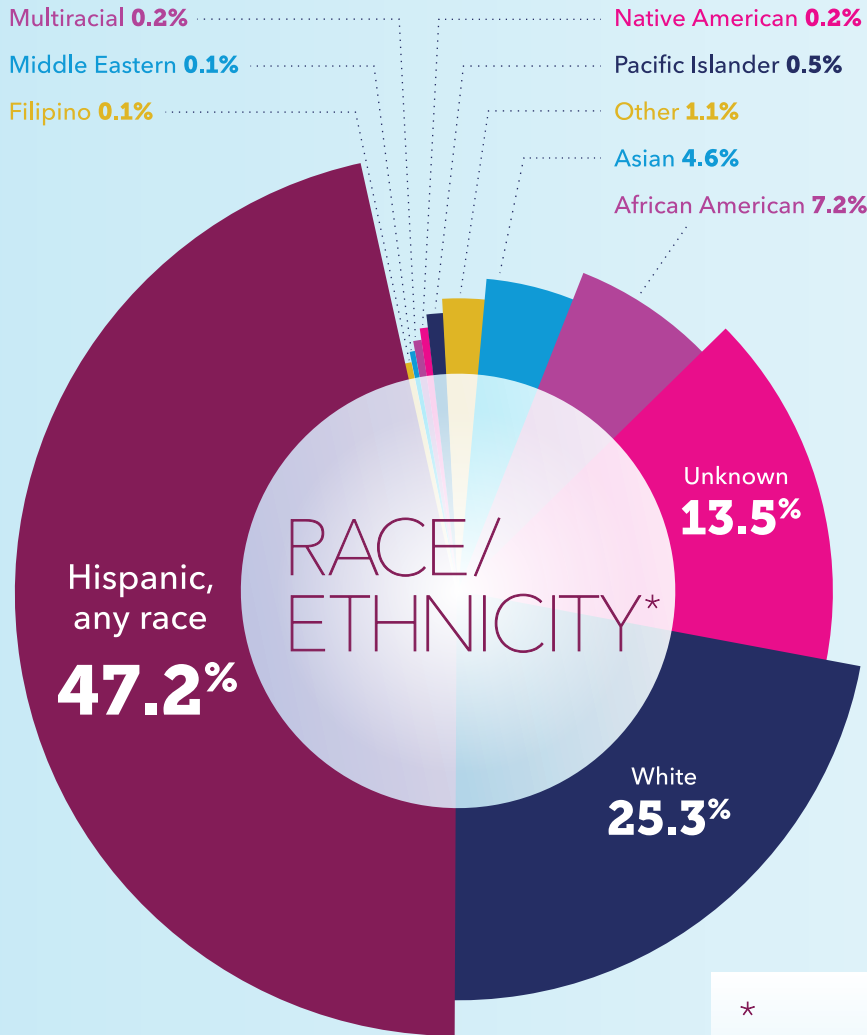


Darrah D. Johnson
Darrah DiGiorgio Johnson
President & CEO



Kate Nyce
Kate Nyce
Chair, Board of Directors

Patient Demographics in Health Centers



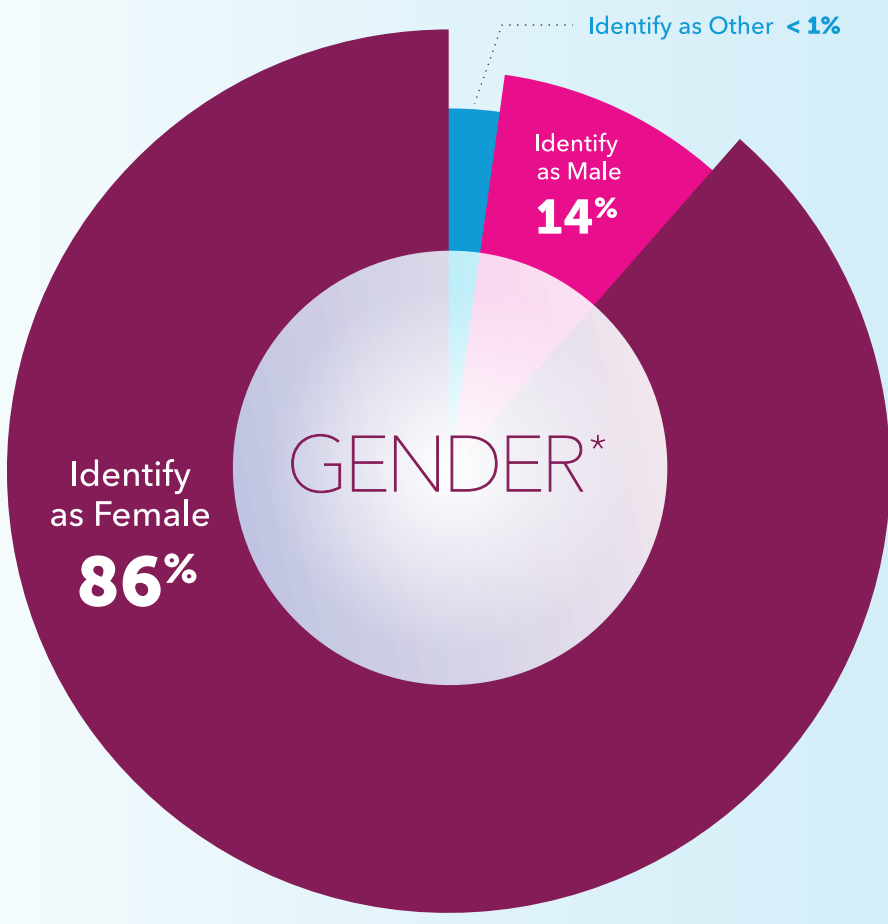
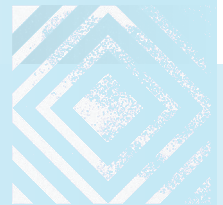
Hispanic, any race	62,341	Pacific Islander	610
White	33,458	Native American	297
Unknown	17,775	Multiracial	256
African American	9,486	Middle Eastern	144
Asian	6,076	Filipino	134
Other	1,475		

* Percentages may not add up to 100 due to rounding.

During 2020, we added the options for how we capture race and ethnicity to include "Middle Eastern" and "Filipino" as part of our commitment to continually improving the quality of our patient data as a part of diversity, equity and inclusion initiatives.

18-24	52,673
25-29	33,471
30-34	20,186
35-49	18,854
< 18	5,291
> 50	1,577

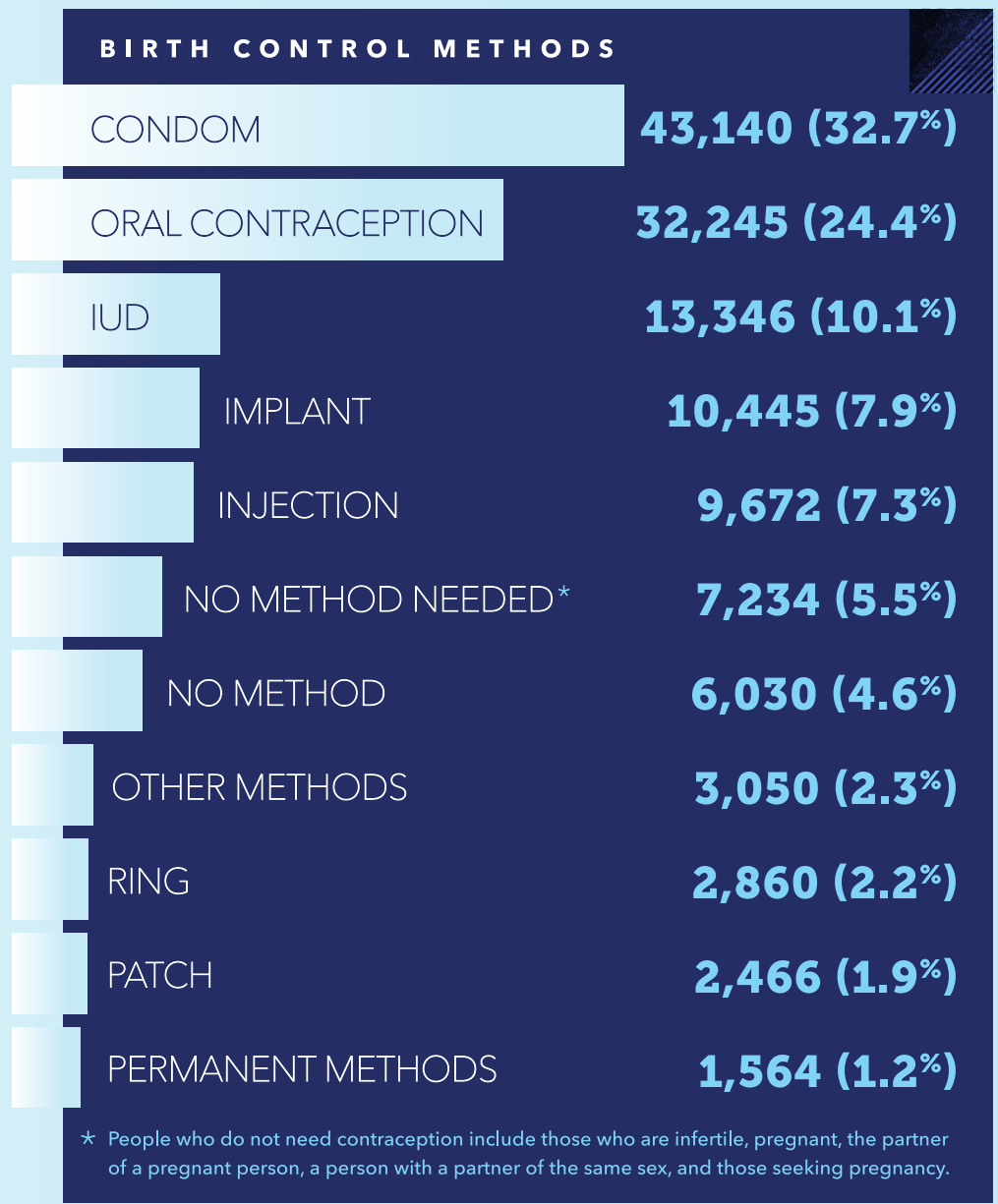
TOTAL PATIENTS
132,052



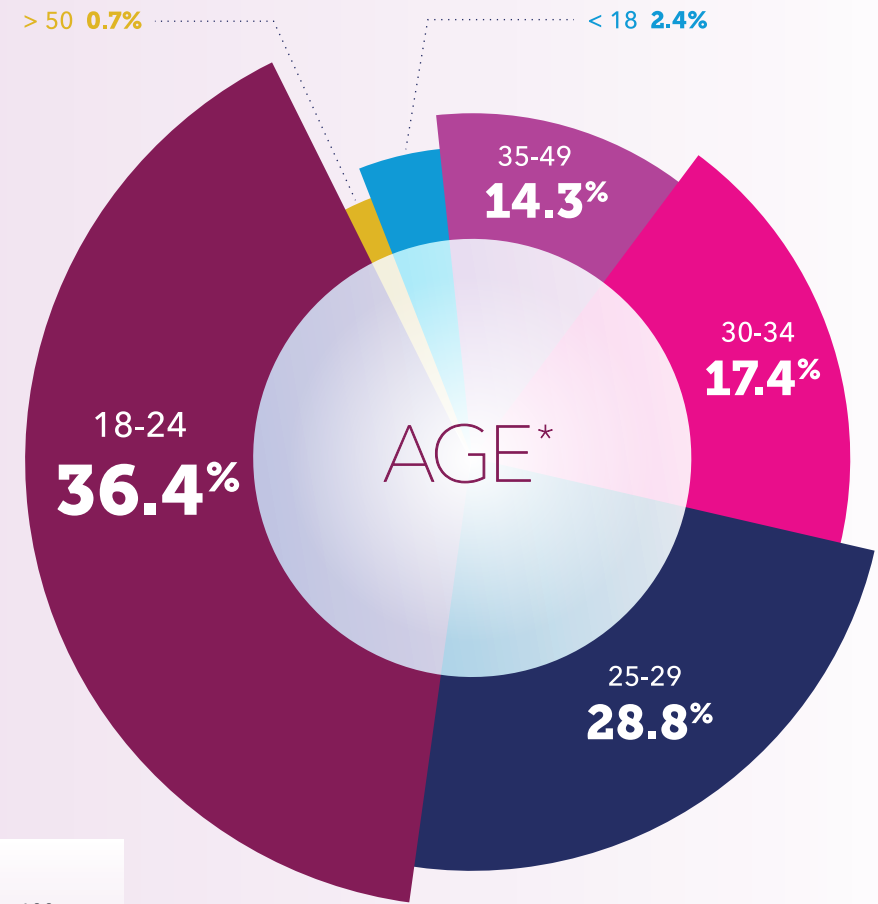
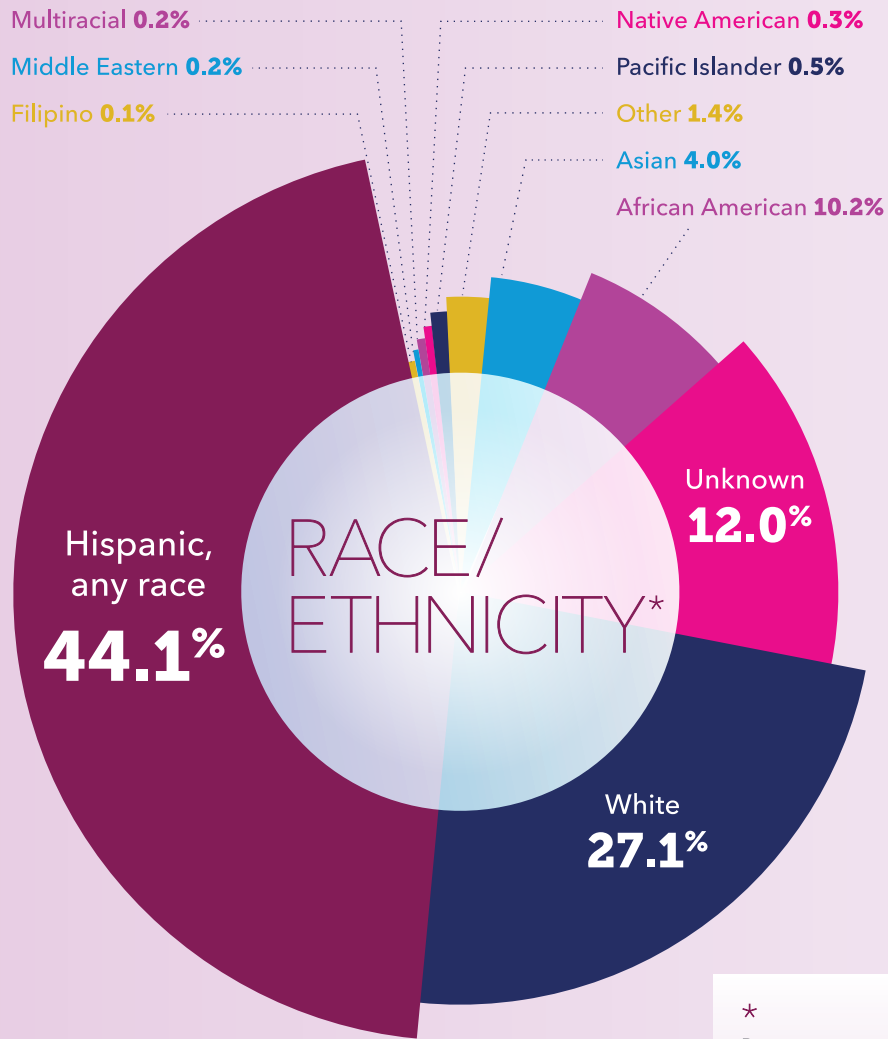
Identify as Female **113,735**
 Identify as Male **18,297**
 Identify as Other **20**

Contraception

Types of birth control our patients were using during their most recent visit to our health centers



Patient Demographics for Telehealth



Hispanic, any race	1,645	Pacific Islander	17
White	1,012	Native American	12
Unknown	446	Multiracial	7
African American	379	Middle Eastern	7
Asian	150	Filipino	5
Other	52		

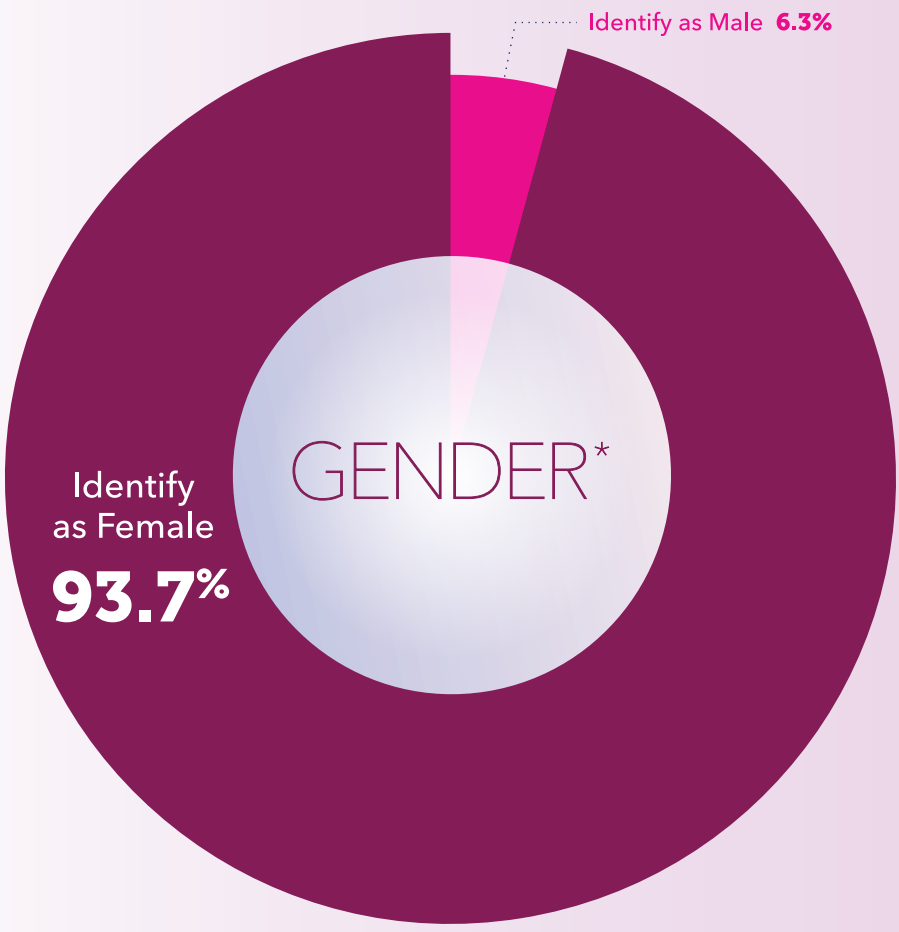
*

Percentages may not add up to 100 due to rounding.

During 2020, we added the options for how we capture race and ethnicity to include "Middle Eastern" and "Filipino" as part of our commitment to continually improving the quality of our patient data as a part of diversity, equity and inclusion initiatives.

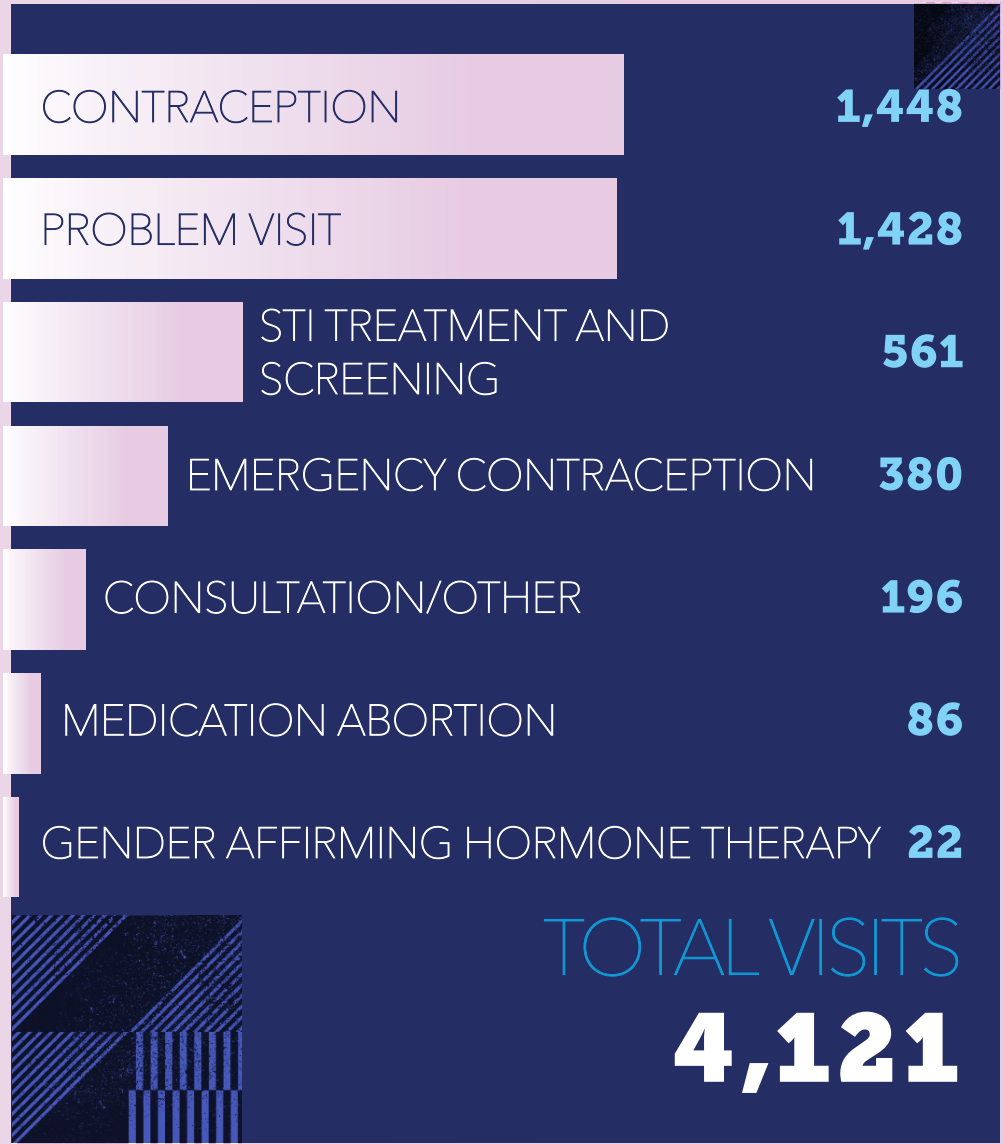
18-24	1,357
25-29	1,074
30-34	651
35-49	532
< 18	91
> 50	27

TOTAL PATIENTS
3,732



Identify as Female **3,497**
Identify as Male **235**

Telehealth Visits by Type



SUMMARY OF SERVICES

TOTAL HEALTH CENTER PATIENT VISITS

246,496*

Some services provided during those visits include:

CONTRACEPTION

Reversible Hormonal	
Oral Contraception	31,453
Injection	21,992
Ring	3,178
Patch	3,075
Reversible Long-Acting	
Implant	7,151
Hormonal IUD	4,874
Copper IUD	2,409
Permanent Birth Control	
Procedures	
Male	297
Female	57
TOTAL	74,486

EMERGENCY CONTRACEPTION 19,012

STI TESTING

Chlamydia and Gonorrhea Tests	269,123
HIV Tests	60,231
Other STI Tests	41,213
TOTAL	370,567

CANCER SCREENING AND PREVENTION

Pap Tests	14,706
Clinical Breast Exams	7,955
HPV Treatments	1,726
Colposcopy/	
LEEP Procedures	1,154
TOTAL	25,541

ABORTION SERVICES**

Medication	10,778
In-Clinic	7,916
TOTAL	18,694

PREGNANCY TESTS 74,695

PrEP AND PEP VISITS 1,397

* Decrease in volume and service changes may be noticeable due to the impacts of COVID-19.

** Medication abortion numbers have increased as a percentage of total abortions performed at our affiliate over the last several years, which mirrors trends seen nationally in abortion care. We have also expanded the number of clinicians who can perform abortions and the number of centers where this service is provided, which is especially important for those who have had barriers to care in the past.

COMMITMENT TO BLACK COMMUNITIES

We will dismantle systems of privilege and oppression within Planned Parenthood of the Pacific Southwest. This includes addressing the history of racism in sexual and reproductive health care and Planned Parenthood's past.

We will focus on the health disparities that affect Black people in our region as we continue promoting health equity.

We will use our advocacy power and resources to support, elevate, and center Black-led and anti-racism organizations who are leading the way.

Our Commitment elaborates on these actions and details our goals to support Black communities in our region. This is the next step in our work to build a more equitable organization, movement,

and society. If Black people are unable to exercise bodily autonomy, to live their daily lives—or protest the violence against their lives—without the fear of violence or murder, we can never achieve justice, let alone reproductive freedom.

To read our affiliate's full statement, please visit planned.org/commitment.

PLANNED.ORG/
COMMITMENT 

Milestones

I love the tele visits!

It makes it very easy and convenient!

YOUR PLACE OR OURS:

Our affiliate launched telehealth services in April 2020, just weeks after COVID-19 school closures and stay-at-home mandates hit California. This innovative way of delivering our services helped protect the health of our staff and our community while providing patients with the high-quality care they need and deserve. In the first few months, we provided more than 4,100 visits for birth control, gynecological concerns, STI testing, emergency contraceptives, abortion counseling, and other services.

I love this video access to the doctor. I had an appointment within 2 days. And it's wonderful when you have a mobility issue or transportation problems and can't get to the office. Thank you.

It was great how quickly I was able to get an appointment and be connected with a clinician. Being able to have a tele-visit saved me so much time ... using telehealth took less than 30 minutes.

TELEHEALTH THRIVES

Before my in person appointment I had a video chat with my doctor. She was on time and took her time. She looked professional, listened to all my concerns, and read all the regulations. Although she could have sent me what I needed, she recommended that I see a doctor at the health center and I did. I like that she was prepared, read my chart before connecting and she knew what I needed. The system was great. I was connected with the reception and they did my appointment very quickly and professionally.



Milestones

CARING THROUGH COVID-19

Reproductive health care isn't just nice to have, it is essential. Throughout the pandemic we are making sure our patients have access to STI screening and treatment, contraception, preventive health care (like Pap tests), and abortion services. We are providing these fundamental health care appointments to our community when many other medical professionals have been unable to do so. We are doing everything in our power to keep our staff and patients safe in our health care centers during these uncertain times.

– Chief Medical Officer Toni Marengo

After COVID-19 triggered stay-at-home orders throughout California in March 2020, our health centers continued to provide the essential services that thousands of people in our region rely on including birth control, STI testing, and abortion. We adapted our visit workflows to adhere to the CDC COVID-19 guidelines for screening, face coverings and social distancing to minimize contact between staff and patients.

Milestones

DIALING IN & DIALING UP PRIDE ONLINE



Staff, volunteers, and supporters from throughout our three-county region joined us in celebration and solidarity at "SD Pride Live", a digital pride event in July 2020. Our Instagram, Facebook, Twitter and YouTube content was liked more than 900 times and was shown to more than 10,000 people.



I am a queer Planned Parenthood of the Pacific Southwest clinician who delivers gender-affirming care, and I am a spouse of a non-binary person. I live, work, and possess the lived experience as a witness to the collective trauma of LGBTQ+ and gender expansive folx. To stand in protest and solidarity with all those who continue to experience discrimination in our community, in the workplace, and at home gives me hope for a future. As long as these disparities exist, I will continue to fight for equity and visibility for my LGBTQ+ community."

– Leslie

Milestones

Guidelines For Answering Questions

Read questions prior to answering.

Answer all questions, if possible.

Use simple, accurate, inclusive language.

Values questions should be referred to parents/trusted adults.

Decline to answer personal questions.

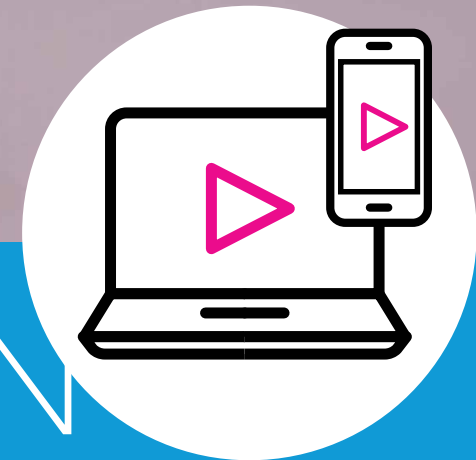
Planned Parenthood

Care



STAY TUNED FOR

SEX EDUCATION



Our education team quickly transitioned their in-person classes to online learning sessions after all California schools closed their doors due to COVID-19 in March 2020. They taught students and professionals virtually, and distributed learning packets to others to ensure students received the education they need to protect their health. The education team also ramped up their sex education work on social media, including expanding to a new platform, TikTok, in partnership with our Marketing department.



Milestones

As we march forward together today, we stand for unity and power and dedication to equity and justice for every single person... We are stronger, hungrier, and more united than ever, and we demand change.

– Darrah DiGiorgio Johnson,
President and CEO, Planned Parenthood of the Pacific Southwest

DARRAH FIRES UP WOMEN'S MARCH

In January 2020, our President and CEO Darrah DiGiorgio Johnson rallied thousands of supporters at the fourth annual Women's March in San Diego with an inspiring speech before marching shoulder to shoulder with the trouble makers and change makers who have created a powerful movement in our community and around the world.

Still Unstoppable

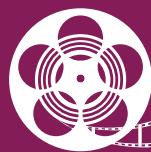
Although our UNSTOPPABLE events in San Diego and Palm Springs were ultimately proved stoppable, our movement is still going strong!

A combined 1,600 guests were expected at our 57th Anniversary Dinner in San Diego and our spring event in Riverside County. Despite the necessary cancellations, our incredible supporters stepped up, helping us reach the \$500,000 matching gift challenge generously sponsored by Gwendolyn Sontheim. Thank you to all of our supporters who stand with us today, tomorrow, and always.



Milestones


REEL WOMEN'S FILM FESTIVAL



**REEL WOMEN'S
FILM FESTIVAL**

SUPPORTING PLANNED PARENTHOOD

This past year, Planned Parenthood of the Pacific Southwest hosted not one, but two, Reel Women's Film Festivals! The 6th annual celebration was held in October of 2019. And in May of 2020, in response to the state's Safe at Home Order during the COVID-19 pandemic, the planning committee got creative and conceptualized a virtual festival, hosted online by our partners at Women Make Movies. Combined, these events raised more than \$75,000 for Planned Parenthood, supporting essential sexual and reproductive health care services in our region.

COVID-19 EMERGENCY
RELIEF FUND 
Care. Always.

 **Planned
Parenthood**[®]
Pacific Southwest

To survive the economic fallout of the COVID-19 pandemic and to ensure our organization's long-term stability, we launched the COVID-19 Emergency Relief Fund, with special help from our friends Cathy Stiefel and Keith Behner, who generously matched the first \$250,000 we raised. Our community of supporters came through like never before to help us withstand the crisis without compromising patients' access to reproductive and sexual health care: In just a few months, our supporters contributed more than \$2 million, which helped us purchase personal protective equipment, retain staff, and introduce telehealth services. We are so grateful to have such committed and loyal friends standing with us.

Milestones

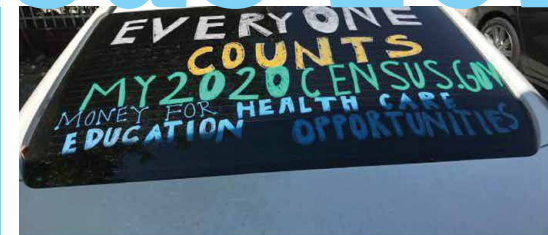
**SHOUT
YOUR
VOTE!**

We launched our largest voter engagement project to date to educate our community, patients, and supporters about the voting process for the November 3rd General Election. We worked to inform our community about how, where, and when to vote through English and Spanish web pages, emails, and ad campaigns on Instagram, Snapchat, Facebook, and Spotify. We also engaged our volunteers and supporters through virtual rallies, as well as phone bank and text bank opportunities to get out the vote. In our health centers, we used posters and flyers to inform our patients and staff about the election and encourage them to vote.

Counted in Census 2020

We reached 95,000+ people via phone, text, social media ads, and in-person, and informed them about the 2020 Census.

Our affiliate engaged in the 2020 Census to ensure that our communities were counted, especially those that are traditionally undercounted and underfunded, like Black, Indigenous, Latinx, people of color, college students, rural residents, farmworkers, and unsheltered people. Census outreach was also used as an opportunity to do wellness checks and connect people to community resources. We partnered with many community partners, as well as the US Census Bureau to mobilize an unparalleled turnout. Our team canvassed, sent texts, made calls, and ran bilingual ads on social media platforms as well as Spanish radio ads in the Coachella Valley and Imperial County. Our work helped Riverside, Imperial, and San Diego counties surpass the 2010 Census response rates.



BY THE NUMBERS

18

HEALTH CENTERS IN SAN DIEGO, RIVERSIDE, AND IMPERIAL COUNTIES.

230

VOLUNTEERS GAVE 2,329 HOURS OF THEIR TIME AND TALENT SUPPORTING OUR WORK IN ADMINISTRATIVE DEPARTMENTS, HEALTH CENTERS AND COMMUNITY OUTREACH.

132,052

PEOPLE RELIED ON OUR HEALTH CENTERS FOR SEXUAL AND REPRODUCTIVE HEALTH CARE DURING 246,496 VISITS.

30,343

PEOPLE RECEIVED SEXUAL AND REPRODUCTIVE HEALTH INFORMATION AND EDUCATION EITHER IN PERSON OR VIRTUALLY THROUGH OUR EDUCATION, TRAINING, AND OUTREACH PROGRAM.

1,540

PEOPLE REACHED VIRTUALLY EITHER FOR PRESENTATIONS, TRAININGS, OR TO RECEIVE COVID-19 HEALTH KITS WITH STRESS RELIEVERS AND SELF-CARE ITEMS.

100%

OF TEACHERS FROM SAN DIEGO UNIFIED SCHOOL DISTRICT THAT PROVIDE SEXUAL HEALTH EDUCATION WERE TRAINED BY PLANNED PARENTHOOD OF THE PACIFIC SOUTHWEST STAFF.

94%

OF OUR PATIENTS WOULD RECOMMEND OUR HEALTH CENTERS TO THEIR FRIENDS AND FAMILY.

FINANCIAL OVERVIEW

REVENUE

MEDI-CAL

\$45,586,104

FAMILY PACT

\$35,803,446

CONTRIBUTIONS

\$11,244,930

PRIVATE INSURANCE & SELF PAY

\$10,752,213

OTHER OPERATING EXPENSES

\$2,135,218

TOTAL REVENUE

\$105,521,911

EXPENSES

PATIENT SERVICES

\$66,173,576

GENERAL & ADMINISTRATIVE

\$15,505,639

COMMUNITY ENGAGEMENT
& GOVERNMENT RELATIONS

\$3,439,525

FUNDRAISING

\$2,027,164

TOTAL OPERATING EXPENSES

\$87,145,904

* Excess of revenue over expenses will be allocated toward facility and program expansion initiatives.



DONOR LISTINGS

THANK YOU TO THE FOLLOWING DONORS

who made gifts from July 1, 2019 to June 30, 2020 to generously support the mission of Planned Parenthood of the Pacific Southwest, enabling us to continue our vital work in our three-county region. Every attempt has been made to ensure accuracy in the donor lists. However, in compiling such a list, omissions and misspellings sometimes occur. Please advise us of any errors by emailing development@planned.org.

CATALYSTS \$100,000+

Anonymous (2)
K. Andrew Achterkirchen
Aqualia International Foundation, Ltd
Bobbie and Jon Gilbert
Beverly Grant
Bryce E. Miller, MD and Donald Orahod
Planned Parenthood Federation of America
Marisa and Bill Rastetter
Gwendolyn M. Sontheim
Catherine Stiefel and Keith Behner
Christy Walton

CHAMPIONS \$50,000 - \$99,999

Anonymous (2)
Alliance Healthcare Foundation
Althea Brimm
Amy Corton and Carl Eibl
Karen and Jim Hall
Rosanne and Joel Holliday
Joan and Irwin Jacobs
Stacy Jacobs, OD
Nora Taylor Jaffe
Strauss Family Foundation
Pat Wilson and Greg Rose

VISIONARIES \$25,000 - \$49,999

Anonymous (3)
Denise and Gary David, PhD
Deborah Halliday
Hervey Family Non-endowment Fund
Marjorie A. Huntington
Theodora Ives
Diane Johnson Charitable Fund
The Parker Foundation
Dr. Jerry Schneider and Elaine Schneider
Karen and Jeffrey Silberman
SIRUM
Robin Toft

TRAILBLAZERS \$10,000 - \$24,999

Anonymous (2)
America's Best Local Charities
Jennifer Ball and Dr. Michael Varney
The Benevity Community Impact Fund
Catherine and Phil Blair
Drs. Lisa Braun Glazer and Jeffrey Glazer
Lyman B. Christopher, Jr.
Randy Clark and Tom Maddox, MD
Dr. Clifford and Carolyn Colwell
Elissa Davis
Margarita Del Castillo
Jackie and Stan Drosch
Lizbeth A. Ecke

Marion Eggertsen
Sue Elam
Susanna and Michael Flaster
Eugene M. and Joan F. Foster Family
Charitable Fund
Sterling C. Franklin
Rosette Garcia and Daniel Kisner, MD
Joseph and Dorothy Goldberg
Charitable Trust
Lynn Gorguze and Honorable Scott Peters
Mike and Rondi Grey
Kay and Bill Gurtin
Lu Ann Hall and Melvin Allen Sweet
R. Elaine Hanson, MD and
Bruce A. Robbins, MD
Doriann and Richard Jaffee
Linda and Mel Katz
James and Marcia Keim
Dianne Kendall
Wally Klein
Sharon and Joel Labovitz
Jennifer Levitt
Vicki Lindblade
Nina MacConnel and Tom Chino
Nate McCay and Jackie Bridge
The Cynthia and George Mitchell Foundation
Ellen and Coleman Mosley
Jenny and Wes Mudge
Lillian and Larry Postaer
Jori Potiker
Arlene and Ronald Prater
Allison and Robert Price
Joyce and Rick Ross
Sager Family Donor Advised Fund
Molly and Robert Schulze
The Margot Skinner Charitable Foundation
Cynthia Walk
Abby and Ray Weiss
Katherine D. White
Marilyn Wilson
David and Sherry Winkler
Dr. Michael and Carole Ziegler

GROUNDBREAKERS \$5,000 - \$9,999

Anonymous (3)
Henry Abarbanel and Beth Levine
Rhonda Amber
William S. and Janice R. Anderson
Frances and Jerry Anderson
Joan Jordan Bernstein
Betty Beyster
Robert Blanchard and Lynda Forsha
Blanchard
Dyana and Brett Brown
Barbara Bry and Neil Senturia
Lynne Carlson
Jamie Carr
Kristen L. Churchill
Jennifer and David Cieslak
Hollis T. Cline, PhD
Theresa and Ted Clowes
Kenneth Cohen and Elena Salsitz
Ms. Leslie H. Coll
Stephanie and Jared Cone
Kevin Tilden and Philip Diamond, MD
Anne Elkin
Phyllis Epstein
Jill and Bernard Esrock
Kellie Evans-O'Connor
Sunni Farkas and Robert Treitler
Laura Farmer Sherman
Judy Feldman
Diane and Elliot Feuerstein
Joy Frieman
Deborah Fritsch and Pat Boyce
Sarah and Michael Garrison
Drs. Lawrence M. and Carol B. Gartner
Kimberly A. Godwin
Nancy Gray
Karen and James Greeley
Marcia Hazan
Peter Salvati and Robin Hensley
Maryka and George Hoover
Marjorie Howard-Jones
Debby and Hal Jacobs

Sarah Jaffe
Johnson & Jennings General Contracting
Kaiser Permanente
Dori and Charles Kaufman
Arnold LaGuardia and Susan Mazza
Barbara and Mathew Loonin
Anne and Andy McCammon
Courtenay C. McGowen
Don and Judy McMorro
Katherine Michaud-Silver
Andrea and Gregory Moser
Sara Moser
Kate H. Murashige and
Chris P. Zones
Network for Good
George and Cindy Olmstead
Catherine Palmer
Clarice and Bill Perkins
John G. Pitcairn
Plumber & Pipefitters
Dr. Ronald Evans and Dr. Ellen Potter
Drs. David and Catalina Preskill
Elizabeth Wall Ralston
Lauren Robertson, MD and
Jennifer Flynn
Nan Robertson
Skip and Marilyn Roskam
Julie Ruedi and Robert Engler, MD
Bob and Sheryl Scarano
Neal and Margaret Schmale
Drs. Peter and Jocelyn Schultz
Bart Sefton and
Marianne McKennett
Laura and Chris Seyfarth
Al Shalloway
Judith Sherman
Carol Shogren
Abby and Stephen Solomon
Jill Stone
Kathleen L. Strauss, PhD
Paula A. Tallal, PhD
Billie Valdez
Molli Wagner
James Williamson and Geoff Kors

Beryl E. Young
Dr. Patricia Zigarmi

LEADERS \$2,500 - \$4,999

Anonymous (4)
Linda and Daniel Allen
ACLU of San Diego & Imperial Counties
AmazonSmile Foundation
Betty Amber
Betsy Arnold
Toni Atkins and Jennifer Lesar
Joyce Axelrod and Joe Fisch
Elizabeth Balistreri
Constance Beardsley
Laura Berend and Bill Zeigler
Drs. Gary D. and Barbara F. Blake
Matthew and Nancy Browar
Christa Burke
Center for Community Solutions
The Chamberlain Family
Gale Chan
Campbell and Michelle Chiang
Carolyn and Steven Conner
Christine and James Cuning
Alexander Dent and
Carrie Knoblock
Sheldon and Marjorie Derezin
Edward and Eleanor Doyle
Lee and Kazumi Duran
Emily and Daniel Einhorn
Dina Fainman, MD
Facebook, Inc.
Beatriz M. Folch-Hayek
Nynke Fortuin and James Klick
Jane Grant
Renata Grossi
Dave and Sally Hackel
Gloria Hall
Colleen Hennessy
Marisa Hildebrand
Isaac Hirschbein and Kathy

Beitscher
Gayle P. Hodges
Paula Hodgkiss
William J. Hudak
Peter B. Hudson
Drs. Stacy and Benjamin Hulley
Gail and Doug Hutcheson
Gordon M. Johns
Beckett and Jack Johnson
Leslie Keith
Julia Kenyon
Robert and Sandy Khan
Ann Laddon and Adrian Jaffer
Drs. Jasmine Lai and Justin Tan
Elizabeth Lancaster
Alan and Ruth Larson
Robert and Suzanne Leif
William and Suzann Leininger
George and Karen Longstreth
Dr. Henri Maget and
Elizabeth Rice Maget
Steven and Alexandra Malk
Marsh & McLennen Agency - West
Iris P. Masotti
Barbara C. McGill
Randi E. McKenzie
Sara McMenamin, PhD
Dr. Colleen McNally
Kevin Monroe
Margaret and Thomas Moore, MD
Benjamin Nyce
Diane E. Quinn
Ann Rice
Hilary and Eric Roeder
Andrea and Brett Roggenkamp
Barbara and Frank Ryan
The San Diego LGBT
Community Center
San Ysidro Health Center
Mary Lou and Kenneth Schultz
Dr. Audra L. Scully
Philip Shapiro
Brian Sheehan
Bernard Silver and Betty Jane Silver
Foundation

Jill Skrezyna and Alex Sun
Nancy Smoke
Dr. Charles Smoot and
Mr. Kevin Winger
Mona Sonnenshein
Donald Spanninga
Nancy and Alan Spector, MD
Carrie and Paul Stone
Nikki Stone and Chris Andersen
Truuwater Financial
United Way of San Diego County
Lisa Walters-Hoffert
M. E. Whitlock Fithian, M.D. and
Donald Fithian, M.D.
LeAnn and Sam Williams
Gregg and Jennifer Wilson
Arelene E. Wolinski

ADVOCATES \$1,000 - \$2,499

Advocates \$1,000 - \$2,499
Anonymous (15)
Valerie Agnew
Katherine and Paul Albitz
The Honorable Deidre Alpert
Maria Al-Shamma
Deena and Ken Altman
Susan and Crystal Atkins-Weathers
Deanna Baker and John Dunn
Donald and Gail Bamber
Bar Pink
Mike and Maureen Bartel
Joseph Bartush
Anthea Beletsis and Gary Danielsen
Katherine S. Belo
Sondra Berk
Mary Ann Beyster
Shawna Biel
Scott Bjerke and Karen Kustedjo
Cindy and Laurence Bloch
Talya Bordin-Wosk
Mary and Richard Borevitz
Gail Boyle

Joe and Mary Braunwarth
Aaron Brennan and Kim Goodwin
Stefana Brintzenhoff
Zachary Bristow
Juanita R. Brooks
LaVerne and Harold Brown
Steven Brown and Richard Cain
Elizabeth E. Bruton
Anita Busquets and William Ladd
Madeline Butler and Arthur Levin
Michael Campbell
Eric Cantrell and Kevin Childers
Carrier Johnson + CULTURE
Harry and Sandra Carter
Yunhui Chae-Banks
Nicholas Chapekiss
Irene Chennell
Edith Catherine Cheshire and
Lan Sing Wu
Peggy Chodorow
Vickie Church
Louis Cohen and Rebecca Vesterfelt
Maggie Coleman
Celia Conover
Darlee J. Crockett
Cultura
Ami Curtis
Cynthia A. Dankberg
Steven and Susan Day
Hugo and Maria De La Torre
Dr. and Mrs. William DeRisi
Carolyn Diamond
Alpha Doan
William Doerrer
Ellen and David Dolgen
Jennifer Dreyer
Susan Dube
Julie and Mitch Dubick
Stephen and Roberta Edelstein
William Eiffert and Leslie Hodge
Judith Eisenberg and
Mark Oberman
Al and Naomi Ruth Eisman

{cont.}



Jill Ellis, MD and Judd Westover, MD
Emanuel and
Anna Weinstein Foundation
Cynthia D. Erb
Kimberly D. Eskelson
Dorothy Ann Fanestil
Anne and David Fege
David Feltman
Richard L. and Beth S. Frank
Robin L. Fraser
Carol M. Frausto
Joan Friedenbergl
Lawrence S. Friedman, M.D.
Friedman Family Charity Fund
Carolyn Fritz
FrontStream
Patti and David Funder
Elaine Galinson and Herb Solomon
Janice Garbosky
Richard A. Gardner
Kurt Gering
Fred and Roben Gerson
John and Mary Giebink
Susan and Douglas Goodell
Joan Goott
Gretchen Grawunder and
Rex Burrows
Marti A. Gray
Denise and Mick Hager
Susan Hamilton and Thomas
Hayward
Dan and Shelley Hammer
Danielle Hammerman
Patricia R. Handfield
Elizabeth Hansen
Heidi Hansen and Richard Watkins
Mary Ann and Jerry Harris
Stephen C. Hecht
Nancy K. Hedrick
Drs. Karen L. Helrich and
Bertram C. Edelstein
Ms. Dede Herst and
Dennis Cook, MD

Jeremy Hobbs
Hologic, Inc.
Alan Stein and Terry Holpert
Dana C. Hook
Bruce and Jane Hopkins
Carol Hopkins
Scott Horsley
Katherine Howard
Judith Hoyt
Dr. and Mrs. Anthony Huang
Carol E. Hunt
Hugh M. Davies and Faye Hunter
Joe Ireland
Hilary and Selwyn Isakow
Johnson & Johnson
The Paula B. and Oliver W. Jones
Family Foundation
Rose Lee Josephson, PhD
Diane G. and John J. Kane
Jerald and Marge Katleman
Richard Kelley
Fred Khoroushi and
Gita Khadiri
Lauri Kibby
Dr. Lynn Ngo Kihara and Ryan Kihara
Matt Kilbride
Deb Klatskin and Burt Sutker
Mrs. Terry Klitzner
Gayle Klusky
Nancy Koehler
Paula J. Konoske
John Kroll
Vincent Landis
Adrienne Lane
Cathleen J. Law
Marlene and Richard Levine
Arthur and Sandy Levinson
Julie and Harry Litman
Marshall Littman
Dawn Long
Diana Long
Keith Loss
Henry Lozada Ortiz

John H. Luttgens
Edward and Nancy Lyon
Jill Weitzen MacDonald
Bonnie MacRitchie
Karen Maier
David and Patsy Marino
Julianne Markow
Mingming Marsh
Lidia and Ted Martinez
Betty J. Mason
Reverend Stephen J. Mather
T. D. Mathewson
Jane and James Timothy McCarthy
Steve McIntee and Bob Meinzer
Robert McKenna
Karen McLachlan
Catherine McMahan
Patricia A. McQuater
Christa M. McReynolds
Ann Mears
Katherine W. Merten
Dr. Maggie and Mr. Paul Meyer
Laura and Eric Michelsen
Marlene Millen
Sally and David Miller
Jeanie and James Milliken
Chris and Hope Mirendil
Sue and Anton Monk
Scot Morris
Robert and Kathryn Murtfeldt
Charles and Karen Nager
Eleanor and Jerome Navarra
Navias Family Foundation
Cherie Ng
Lynn Ngo Kihara and Ryan Kihara
Tien Nguyen
Kate Nyce and Dan Tandon
Julie and Harry Litman
Linda L. Oster
Barbara Oswald
Artie M. Owen
Melanie Palm, MD
Vann and Carol Parker

Rafael and Marina Pastor
Dorian and Jeffrey Patterson
Linda and Don Perry
Janace and Stephen Pierce
Pilgrim United Church of Christ
Dean and Sharon Popp
Debra M. Preece
Joyce and Ron Rabens
Janet Raschke
Laurayne Ratner
Mindy Reed
Robin Reinhart
Renaissance Charitable
Foundation, Inc.
Steven and Carol Richter
Shirley Y. Robbins
Paula Robertson
Kathryn L. Rodean
Denise J. Rosenblatt
Laura Rotter and Clay Shinn
Robin S. Roulette
Robert Rubenstein and Marie
Raftery
Betsy and Lea Rudee
Jo-Ellen and Donald Rudolf
Don and Cynthia Rushing
Patricia Ryan
Roseanne Sabo
Debra Sakarias
Abbie and Josiah Sand
Donald and Nancy Sandweiss
Kirvin Satterwhite and George
Tucker
John A. Saunders
Anne Schafer
Isabel and Scott Schechter
Renee S. Schor
Judy and Marc Schuckit
Schwab Fund for Charitable Giving
Dr. Stephen and Jill Seagren
Warren H. Shafer and
Pamela K. Willis
K. Barry and Janet Sharpless

Ann Sheffer and Bill Scheffler
Valerie N. Sheline, MD and
Raymond Sheline, MD
Susan Shirk and Sam Popkin
Susan Shurin
Joy Silver and Atma Wiseman
Nancy Sinatra
Kalpana Singh Rhodes and
James Rhodes
Beth Sirull
Alan Smith
Grace V. Smith
Katherine Smith
Maxine Snyder
Carol Spielman-Ewan
Eileen and Marvin Stern
Linda T. Stetson and James Rice
Martin Stone
Joyce and Ted Strauss
Streeter Printing Inc.
Miriam and Benjamin Susman
Paula Taylor and Bernard Kulchin
Timothy Taylor
Stephanie Tesch and Bill Van Vooren
Donna Thal
The Wall Family Fund
Lydia Thompson
David O. Toft
Stephen Treadgold and
Greta Botka Treadgold
Evelyn M. Truitt
Carl Trygstad, MD
Stacey Valencia
Diana and Matthew Valji
Michael and Beth Wapner
Victoria Watkins
Music Watson
Robert Watson
Robin Weaver and Edward Kusnierz
Jane Weiss
Rich Weissman and J.D. Horn
Leland and June Welsh
Judith Wenker

David B. Wexler
 Kevin Whaley
 Judith L. White
 Sarah White and David Gray
 Alexa Wilson
 Sally and Dean Wilson
 Shannon and Scott Wilson
 Claudette and Will Wilson
 Ji-Yun Winfree
 Karin Winner
 Kitty and Keene Wolcott
 Mary Yoder
 YourCause
 Dr. Temple Zander
 Dr. Paul and Susan Zlotnik

LEGACY CIRCLE

Ensuring the long-term stability of Planned Parenthood of the Pacific Southwest through charitable planned gifts.

Anonymous (51)
 K. Andrew Achterkirchen
 Michelle Adams
 Joyce F. Axelrod
 Sandra D. Barstow
 Laura Berend and Bill Zeigler
 Joan Jordan Bernstein
 April Blankfort
 Susan M. Blitz
 Beverly Boggs
 Dave Bousson
 Billie Bowen
 Lorraine and William* Boyce
 Barbara Bry and Neil Senturia
 Dr. and Mrs. Edgar D. Canada
 Michele Carlson
 Cynthia C. Carpenter
 Richard and Julia Carson
 Sandra and Harry Carter

Diana Strauss Casey
 The Chavez Trust
 Dr. George Kung and Jean Cheng
 Pam Clark and Peter Zschiesche
 Randy Clark and Tom Maddox, MD
 Eileen M. Clause
 Patricia Ann Cornelius
 Amy Corton and Carl Eibl
 Darlee J. Crockett
 Jacqueline Crowle and Charles Scott
 Joan P. Cudhea
 Yvon Dacayana
 Joan M. Davis
 Joy L. Delman
 Judith deNooy
 Kevin Tilden and Philip Diamond, MD
 Joan Dixon
 Jacqueline and Stanley Drosch
 Sue Ebner and Jack Farnan
 Margaret J. Elliott
 Herbert and Paula Engel
 Karyn Farr
 Suzanne Finch
 Susanna and Michael Flaster
 Nynke Fortuin and James Klick
 Dr. Peter* and Mrs. Carol Frank
 Robin R. Friedheim
 Deborah Fritsch and Pat Boyce
 Victoria L. Gallagher
 Drs. Lawrence M. and Carol B. Gartner
 Bobbie and Jon Gilbert
 Dale and Donald Goldman
 Marcy Goldstone
 Dr. Barbara and Dr. Leonard Gosink
 Beverly Grant
 Carol L. Grimes
 Adrienne M. Hakes, EdD
 Vince Hall
 Dan and Shelley Hammer
 R. Elaine Hanson, MD and Bruce A. Robbins, MD

Kay and Philip Harry
 Kae Hensey
 Ingrid Hibben
 Anne Hoiberg
 Rosanne and Joel Holliday
 David and Corrine Hollings
 William J. Hudak
 Beth Faber Jacobs
 Howard Jacoby
 Marla and John Jensen
 Linda B. Juhasz
 Dori and Charles Kaufman
 Ronald L. Kay
 Jan Klauber and Jim Melli
 John Kroll
 Nora La Corte, PhD
 Ann Laddon
 Vadee Lee
 William and Suzann Leininger
 Arthur and Sandy Levinson
 George and Karen Longstreth
 Leanne Hull MacDougall
 Dr. Henri Maget and Elizabeth Rice Maget
 Di Marcus
 Terry Marsh
 Eleanor McCardle
 Susan McDowell
 Barbara C. McGill
 Phyllis Sauer McGrath
 Randi E. McKenzie
 Don and Judy McMorro
 Bryce E. Miller, MD and Donald J. Orahood
 David and Sally Miller
 Judith P. Miller
 Dana Mosser
 Edie Munk
 Kathryn Myers
 Val and Ron Ontell
 Laurie Orange
 Catherine M. Orth
 Elke Patton

Leonard Pellettiri
 Helen M. Pendleton
 Arlene and Ron Prater
 Diane E. Quinn
 Marisa and Bill Rastetter
 Joan and Robert Reese
 Andrea Robinson
 Ruth Rollins
 Dr. Beatrice Rose
 Joyce and Rick Ross
 Elliot and Eileen Schubert
 Anna and Mario Scipione
 Nadine L. Scott
 Dr. Audra Scully
 Annette Seppanen and Curtis Nelson
 Katharine Sheehan, MD and Frederick Walker, MD *
 Tracy Skaddan
 Jan Slater
 Nancy and Alan Spector, MD
 Sara Standerford
 Terri J. Stearns
 Rosemary George Straley
 Dr. Paul U.* and Anita L. Strauss
 Kathleen L. Strauss, PhD
 Kathryn Sturch
 Paula Taylor and Bernard Kulchin
 Robin Toft
 Carol and Lawrence Veit
 Kristen Victor
 Molli and Arthur Wagner, PhD*
 Shirley L. Weaver
 Abby and Ray Weiss
 Jill Weitzen
 Judith A. Wenker
 Judith L. White
 Marilyn and Stuart C.* Wilson
 Pat Wilson and Greg Rose
 Arelene E. Wolinski
 Debra and Tim Zaleschuk
 Leslie S. Zoref

List as of June 30, 2020

* Deceased

Please consider including Planned Parenthood of the Pacific Southwest in your will.

Planned Parenthood of the Pacific Southwest is a tax-exempt organization. Any bequest is fully deductible for federal estate tax purposes and our tax ID number is 95-6111785. To plan a bequest or if you have any questions, please contact the Development department at 619.881.4626.

REALIZED BEQUESTS

Planned Parenthood of the Pacific Southwest remembers fondly and with deep appreciation donors who are no longer with us yet continue to provide support through their estate plans as members of the Legacy Circle, founded in 1963.

Anonymous (28)
 Muriel Adams
 Carolyn Ann Ahlers
 Bud and Polly Aldige
 Carol Ash
 Sandra Atkinson
 Henry S. and Marietta W. Aurand
 Ann Baerwald
 Marcella Barkow
 Anne R. Barry
 Shirley Bell
 Elisabeth Boyer
 Dr. William M. Bristow
 Edward J. Bye
 Ruth Campbell
 Margaret L. Caperton

{cont.}

HEALTH CENTERS

Josephine Carey
 David and Pamela Carton
 Marcella Coolidge
 Mildred D. Cooper
 Minna O. Cooper
 Daiber Family Living Trust
 Rita Delapa
 Lorenzo Dell'Armo
 Marion and Frank Dixon
 Catherine Dorgan
 Marlene Y. Ebert
 Elisabeth (Jinx) Ecke
 Michael B. Eddy
 Jack Epstein
 Fannie and Lewis Fisher
 Vaughdean Forbes
 James H. Forrester
 Pauline Foster
 Gretchen M. Gerlach
 Lois M. Griffith
 Leslie Jane Hahn
 Barbara F. Hallman
 Mrs. Cynthia W. Haney
 Mary E. Harvey
 Anne S. Hertzberg
 Ruth Ireland
 Margaret Jacobs
 Sandra Jeffers
 Diane M. Johnson
 Clyde A. Joslyn
 Louisa Kassler
 Elizabeth Kent and Edith Matlack
 Kern Family Trust
 Philip M. Klauber
 Martha-Ann Klimo
 Frances Klipper
 Betty and Ed Law
 Merle K. Lewis
 Victor and Thelma Lindblade
 Yolanda Luney
 Mary Lou Swift Mantle
 Sanford L. Margolies
 Alice McCauley
 Ree and Maurice Miller
 Ruth H. Milliken

Frances Miner
 Mary L. Minshall
 Kimball and Mary Moore
 Edward O'Toole
 Edith Parker
 Dr. Patricia D. Peterson
 William Plock
 Steven R. Prewitt
 Barbara Ramsey and Sherry
 Henderson
 Harold Rand
 Nancy and Donald Ross
 Elizabeth Schock
 Selby
 Donna Lee Semelmaker
 Roger Shaw
 Helen S. Simmons
 Thomas and Helen Slaven
 Max B. Southwick
 Dorothy Stein
 Norma Sullivan
 Marjorie Tess
 Annie Titlebaum-Schwartz
 Verna T. Turner Lind
 Irma "Plüdi" Waser
 Wheller Trust
 Gordon and Margaret Winkler
 New Adventure Foundation
 Mildred and Burnett C. Wohlford

List as of June 30, 2020

CHULA VISTA

1295 Broadway, #201
 Chula Vista, CA 91911



CITY HEIGHTS

4305 University Ave., #350
 San Diego, CA 92105



COACHELLA

49-111 Highway 111, #6-A
 Coachella, CA 92236



IMPERIAL VALLEY

1463 South 4th St.
 El Centro, CA 92243



KEARNY MESA

7526 Clairemont Mesa Blvd.
 San Diego, CA 92111



MIRA MESA

10717 Camino Ruiz, #258
 San Diego, CA 92126

**COLLEGE AVENUE
SARAH WEDDINGTON
CENTER**

4575 College Ave.
San Diego, CA 92115



CORONA

2079 Compton Ave., #104
Corona, CA 92881



EL CAJON

1685 E. Main St., #301
El Cajon, CA 92021



ESCONDIDO

347 W. Mission Ave.
Escondido, CA 92025



**EUCLID AVENUE
PARKER CENTER**

220 Euclid Ave., #30
San Diego, CA 92114



**FIRST AVENUE
MICHELLE WAGNER
CENTER**

Family Planning
Specialty Services

2017 First Ave.
San Diego, CA 92101



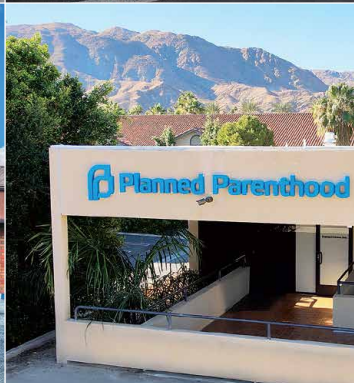
**MISSION BAY
MIMI BRIEN CENTER**

4501 Mission Bay Drive, #1C
San Diego, CA 92109



MORENO VALLEY

12900 Frederick St., Suite C
Moreno Valley, CA 92553



RANCHO MIRAGE

71777 San Jacinto Drive, #202
Rancho Mirage, CA 92270



**RIVERSIDE FLASTER
FAMILY CENTER**

3772 Tibbetts St.
Riverside, CA 92506



VISTA ISABELLA CENTER

1964 Via Centre
Vista, CA 92081





ADMINISTRATION CENTERS

HOLLIDAY FAMILY ADMINISTRATION CENTER

1075 Camino del Rio South
San Diego, CA 92108

619.881.4500

RIVERSIDE ADMINISTRATION CENTER

3550 Vine St., Suite #125
Riverside, CA 92507

951.222.3160

IMPERIAL ADMINISTRATION CENTER

1463 South 4th St.
El Centro, CA 92243

619.881.4528



@PPPSWhealth

PLANNED.ORG

