



NEWS SOURCE

Planned Parenthood of Northern New England

Spring 2024

Dear Friends,

Spring has finally sprung here in northern New England. It might take us a little longer to see the blossoms and the green grass and leaves, but once we emerge, it is so worth it! I hope you're enjoying these warmer, longer days.

Just as nature finds a way through the challenges of winter, here at PPNNE, we navigate through every challenge that comes our way. These post-pandemic times have not been easy for any health care provider. There are systemic challenges plaguing the health care industry that are even more pronounced for abortion care providers – especially Planned Parenthood. We face political attacks and defunds, managing through the ongoing impact of the pandemic on care, workforce shortages, inflation and increased costs for abortion providers, and below-market reimbursements, especially for PPNNE, which offers no-cost or reduced-cost care to patients with low incomes.

As you'll see inside this edition of News Source, the loss of access to reproductive care only continues to grow since the *Dobbs* decision that reversed *Roe v. Wade* two years ago. Most notably, Florida recently instituted a six-week abortion ban. This is a huge blow to access, especially in the southeast part of our country. Thanks to supporters like you, we're ready and able to see anyone who needs care, whether from Maine, New Hampshire, and Vermont, or those who might travel here to get the care they need.

We're keeping a close eye on the courts, with big decisions from the Supreme Court expected in June. You can read more about the important cases we're watching and planning for inside.

Through it all, no matter what challenges come our way, I'm so proud to report that here at PPNNE, we keep doing what we do best: providing incredible, non-judgmental, and life-changing care to everyone who comes through our doors. No one is turned away due to an inability to pay. For many who come to see us, we may be the only health care provider they see in a year. And we know from patient surveys, which consistently rank us in the high 90th percentile in patient satisfaction, that we're making a real difference.

I hope you'll take a moment to read this edition of News Source and feel proud of what your support is helping to make possible. As we look to the future, we know our role as a safe haven for reproductive freedom here in northern New England is critical to keeping access available.

Thank you so much for joining us in this vital work.



Onward together,

Nicole Clegg
Interim CEO



Serving Maine, New Hampshire, and Vermont

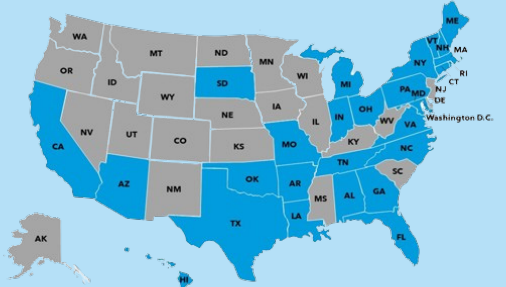
784 Hercules Drive, Suite 110, Colchester, VT 05446
supportus@ppnne.org | 1-800-287-8188 ext. 9704 | www.ppnne.org

Abortion Access Update

The State supreme court of Florida has allowed a six-week abortion ban to take effect in a devastating blow to reproductive freedom.

Florida has played a unique role since the Dobbs decision in maintaining access for neighboring states, and is also a key access point for the Caribbean.

PPNNE Abortion Patients Last Year
3,657 Patients from 27 States
(Indicated in blue)



PPNNE is proud of our vital role as a safe harbor, with abortion access intact across our three states. As restrictions grew around the country, PPNNE was ready to help those in need. Over 7% of our abortion patients come from outside of our region. Because of our established partnership with other affiliates, our shared patient access and abortion navigation means that we can be a resource for those impacted and able to travel to our region.

Your support helps us keep this access open and available to people across the country who have fewer and fewer options for care.

Your Support *(of all kinds)* Makes a Difference!

Business sales, benefit nights, bake sales, art sales, yoga classes, concerts, dance parties, house parties, races, college projects – the list of the different ways local businesses and individual supporters help raise funds for PPNNE goes on and on.

We are so grateful. And inspired!

On behalf of the tens of thousands of patients who rely on us every year, and all of the citizens across Maine, New Hampshire, and Vermont who count on PPNNE to protect and defend our rights, thank you so much for ALL the creative ways you support PPNNE, and for creating spaces where others in your community can join you!

Keep 'em coming! If you want to host a house party or event, or if your business wants to support PPNNE, please tell us about it!

Contact us at supportus@ppnne.org to let us know what you're doing.

PPNNE is your local provider!

What's the difference between Planned Parenthood of Northern New England (PPNNE) and Planned Parenthood Federation of America (PPFA)?

PPNNE is your local Planned Parenthood affiliate. We provide health care services to patients at 15 health centers across Maine, New Hampshire, and Vermont, in addition to through our telehealth program. We also provide sexuality education and are active in statewide policy direction.

PPFA is the national umbrella organization for local affiliates. They provide leadership for reproductive health care issues at a national level, but do not offer direct health care services.

While PPNNE and PPFA have shared aspirations, we operate within diverse landscapes. As a network of local affiliates, along with a national office, we recognize that our work at the local and state level is diverse, faces different challenges, and is best positioned to serve local communities.



News That Matters – What is happening in the courts?

Alliance for Hippocratic Medicine v. U.S. Food and Drug Administration Update

This case uses junk science to allege that mifepristone (one of the two very common, safe, and extremely effective drugs used in medication abortions) was wrongly approved by the FDA 22 years ago.

The U.S. Supreme Court held their oral arguments last month, and based on the questions the justices asked, two themes came up:

- *Whether or not the group of anti-abortion doctors who brought the case to the U.S. Fifth Circuit Court of Appeals – who do not themselves prescribe mifepristone – has standing to sue over the FDA's approval.*
- *Whether the U.S. Fifth Circuit Court of Appeals erred in upholding the preliminary injunction of FDA's 2016 and 2021 actions expanding access to mifepristone, by allowing it to be mailed.*

Of note were questions from Justices Alito and Thomas about the Comstock Act, a 150-year-old law that prohibited the mailing of birth control, lewd material, and any information about abortion.

Over the years, this law has been unenforceable in large part by court decisions supporting the right to privacy and *Roe v. Wade*. Since the *Dobbs* decision, there has been increasing concern that extremists will try to resurrect this law to further erode access to reproductive care.

PPNNE is ready and able to continue to ensure our patients get the care they need, even if mifepristone is unavailable.

Moyle v. United States (EMTALA) Update

The Emergency Medical Treatment and Labor Act (EMTALA) is a federal law enacted in 1986 that ensures people in medical emergencies get the care they need in hospital emergency rooms.

EMTALA requires hospitals that offer emergency services and receive Medicare funding to provide emergency care to all patients, regardless of their ability to pay – including abortion care – regardless of any religious affiliation or location.

The U.S. Supreme Court recently heard oral arguments in *Moyle v. United States*.

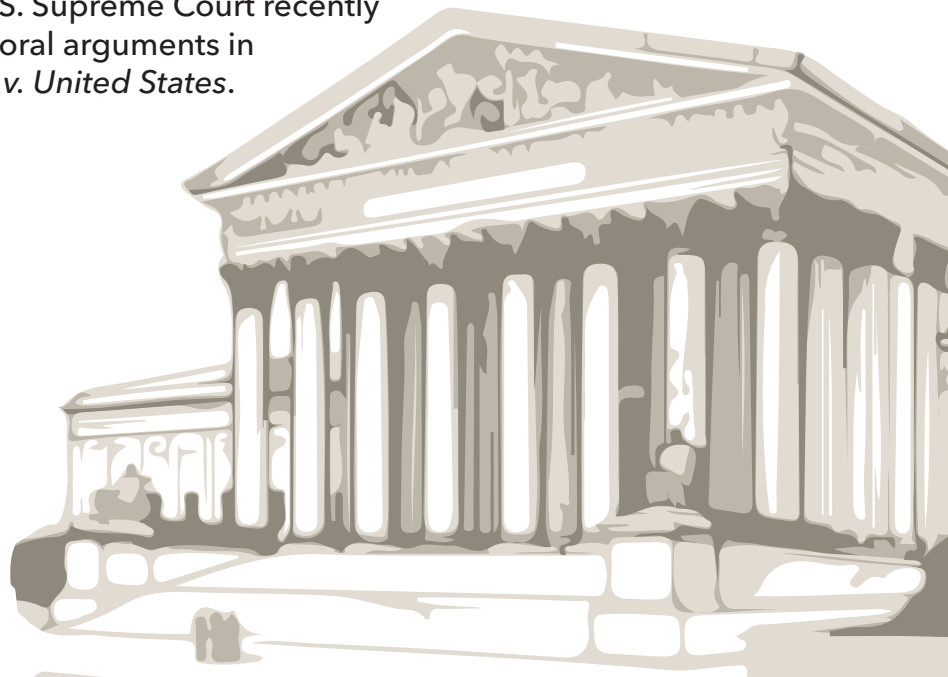
In June, the Court will determine whether EMTALA preempts state laws that ban abortion, such as Idaho's existing ban.

This is a pivotal case.



If the Supreme Court does not reject Idaho's effort to prevent hospital providers from providing abortions to patients experiencing medical emergencies, it will be devastating. Without this law, a hospital could refuse to treat a pregnant person experiencing a medical emergency. Currently, pregnant people are being airlifted out of Idaho on a regular basis to receive emergency care in other states. If the Supreme Court overturns EMTALA, the consequences will be catastrophic.

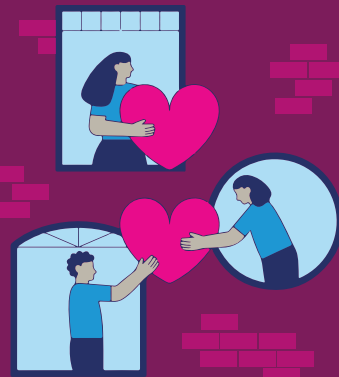
We anticipate decisions in both cases sometime in June, and will provide an update on those results.



**Planned Parenthood's doors stay open – no matter what.
But we can't do it alone, and gifts of all sizes help in big ways.**

I have never before had a medical experience in which I felt so cared for and comfortable being myself. The staff were amazing, informed me of my rights, and ensured I was treated respectfully. I have no insurance or income, and my tests were 100% free, which was an immense relief. It was a clean, comfortable, judgment-free environment and I cannot recommend them enough.

~PPNNE Patient



Thanks to supporters like you, we're able to provide a full range of life-changing and lifesaving care, including care you may traditionally think of when you think of PPNNE:

- Birth control (available in-person or by telehealth)
- Cervical, breast, colorectal, and other cancer screenings
- Emergency contraception (aka the "Morning After Pill")
- HIV testing and PrEP, PEP, and prescriptions for Truvada
- Pelvic pain/bleeding treatment
- Pregnancy testing and a discussion of options
- Reproductive life planning and goal setting
- STD testing, treatment, and prevention services
- A full range of contraceptive care
- Abortion care (procedural abortion or the abortion pill, available in-person or by telehealth)

And did you know we also provide:

- Erectile dysfunction treatment
- Follow-up services for abnormal Pap tests and HPV
- Gender-affirming hormone therapy
- Help to quit smoking
- Initial infertility workup
- Miscarriage care
- Patient support counseling (available in-person or by telehealth in Vermont and Portland, Maine)
- Preconception education
- Vaccines for HPV, the flu, and hMPXV (Monkeypox)
- Vasectomies (available in Portland, Maine and Burlington, Vermont)
- Well-person checkups: a comprehensive, yearly visit, which includes some primary care services, and is personalized to fit you and your needs!

Join us in our vital work of caring for our neighbors, no matter what. You can make your gift today online at www.ppnne.org/donate, or by using the enclosed envelope.

For information on other ways to support our work, including gifts of stock, Donor Advised Funds, a special donation from your IRA, or leaving PPNNE in your estate plans, call our Fundraising team at 1-800-287-8188 ext 9704.

\$10	Box of non-latex condoms	
\$20	One month of birth control pills	
\$30	Emergency contraception	
\$50	Rapid HIV tests for two patients	
\$65	Pregnancy testing & a discussion of options for two patients	
\$90	STD tests (ex: chlamydia, gonorrhea, etc.) for five patients	
\$120	Well-person exam for a patient 18-39 years old	
\$200	Initial transgender visit & hormone injection	



Printed on recycled paper